



ICE PANEL PACKAGES

[f](#) [in](#) [@](#) [▶](#) [🎵](#) | GSBP.CA





ROBINSON RESIDENTIAL
PERSONALIZING HOME DESIGN

THE Concord



TAKE A VIRTUAL TOUR



INCLUDED IN THE PACKAGE

- ✔ Sealed Shop Drawings
- ✔ Joist and Truss Layout
- ✔ Rough Opening Schedule
- ✔ ICE Panel Connection Details
- ✔ Prefab Drawings



ARCHITECTURAL STYLE	Contemporary	SQUARE FOOTAGE	1533
BATH	3 Bathrooms	STOREYS	2 Storey
BED	3 Bedrooms	WIDTH	19ft-0in
GARAGE BAYS	0 Garage Bays	FOUNDATION	Slab or Crawlspace

THE Lynx

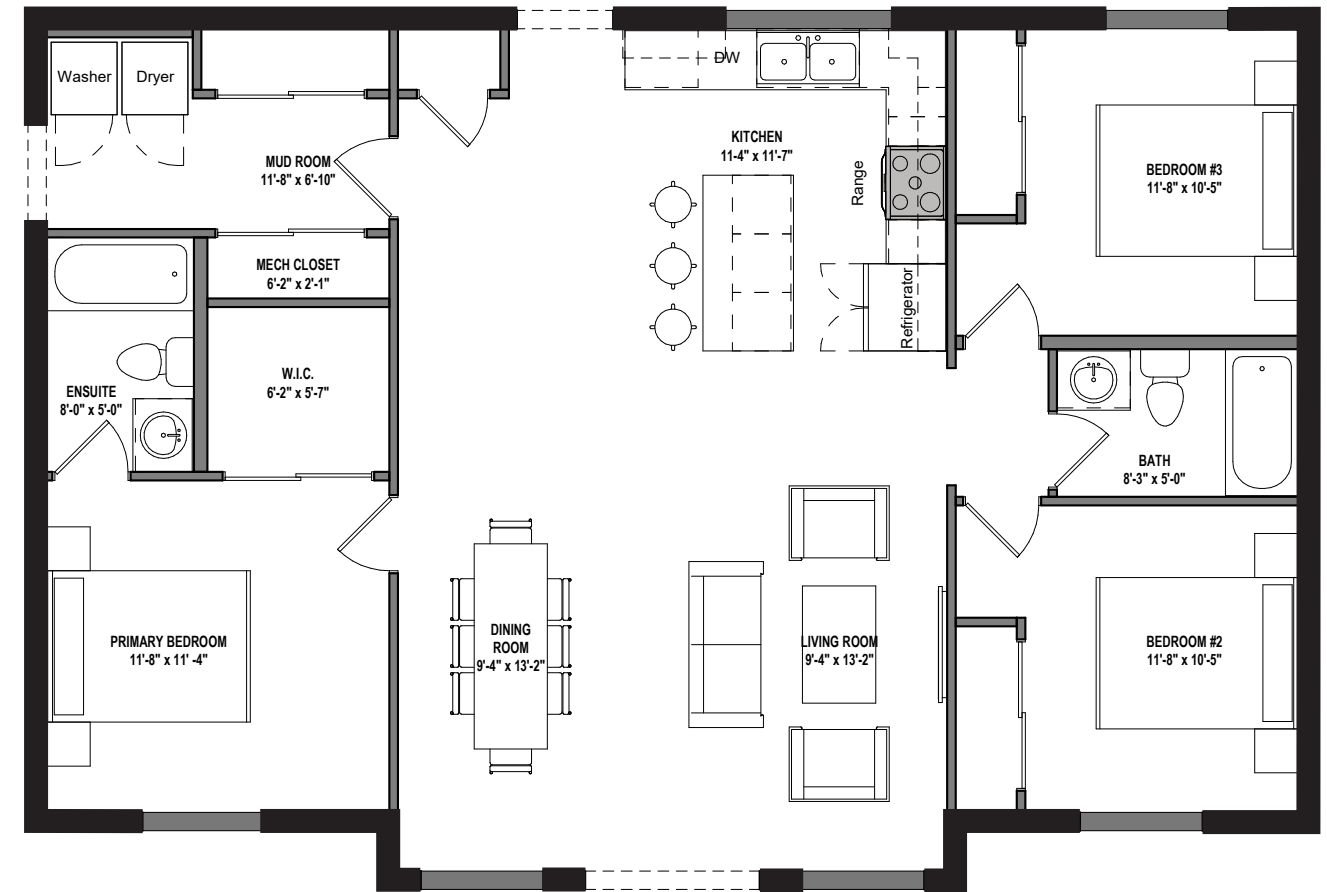


INCLUDED IN THE PACKAGE

- ✔ Sealed Shop Drawings
- ✔ Joist and Truss Layout
- ✔ Rough Opening Schedule
- ✔ ICE Panel Connection Details
- ✔ Prefab Drawings



TAKE A VIRTUAL TOUR



ARCHITECTURAL STYLE	Cabin	SQUARE FOOTAGE	1272
BATH	2 Bathrooms	STOREYS	1 Storey
BED	3 Bedrooms	WIDTH	44ft-0in
GARAGE BAYS	0 Garage Bays	FOUNDATION	Slab or Crawlspace

SAVE MONEY BUILDING GREEN

Approximate Monthly Cost to Heat a 2000sqft Home



ICE PANEL
\$67/MONTH

WOOD-FRAMED
\$200/MONTH



FRAMING



INSULATION



VAPOUR BARRIER

BUILD FASTER WITH ICE PANELS



"This 3 storey multi-unit building in Rankin Inlet, Nunavut took a crew of 6 guys only 30 days to complete."

Cory Vrooman — Cutting Edge Construction



"ICE Panels are quick. Myself and one other person were able to stand 180 linear feet of ICE Panels in one 10 hour day."

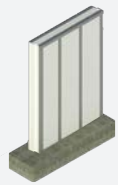
Byron Jones — BGJ Construction Ltd.

ICE PANEL COST COMPARISON

ICE PANEL CONSTRUCTION **R36**

\$16.20/SQFT

PREFAB ASSEMBLY
SINGLE-STEP ASSEMBLY



7.5" WALL THICKNESS

• 7.5" solid EPS core & double steel frame



R36 STICK FRAME CONSTRUCTION

\$15.80/SQFT

PREFAB ASSEMBLY
MULTI-STEP ASSEMBLY



10.5" WALL THICKNESS

• Double 2" x 4" walls with 3.5" gap
• 2 layers of R22 fiberglass insulation
• 1/2" exterior sheathing & 6 mil poly on interior

REDUCE THE IMPACT

THIS ICE PANEL PROJECT
SAVED APPROXIMATELY

44 TREES
FROM BEING
CUT DOWN



Project built in Brandon, Manitoba, Canada

WHAT YOU'LL GET WITH ICE PANELS

- Accelerated completion
- Consistent R-value
- No organic materials
- Less risk for mould
- More square footage
- Airtight assembly
- Lightweight & strong
- Less labour required
- Rebate eligibility
- No on-site modifications

WHAT YOU'LL GET WITH STICK FRAME

- Longer construction timeline
- Organic materials
- High risk for mould
- On-site modifications
- Less square footage
- Inconsistent product
- Heavy product
- Labour intensive

FROM THE ARCTIC TO THE TROPICS

ICE Panels Are Ideal in Extreme Temperatures



Project built in Iqaluit, Nunavut, Canada



Project built in Treasure Cay, Bahamas

ICE PANEL TESTIMONIALS

"We want to build homes for the future, not just for today, and ICE Panels are a great way to achieve that. The ICE Panel has great insulation values and no thermal bridging. The panels feature an EPS core with steel studs, meaning your building envelope won't rot or fall apart – it's long lasting, and that's a great thing to have in a wall."



CARLO VLEEMING
VLEEMING CUSTOM HOMES | LACOMBE, AB

"ICE Panels save so much time; myself and one other person were able to stand 180 lineal feet of ICE Panels in one, ten-hour day. ICE Panels also help us meet the energy step codes in BC as they have no thermal bridging. I definitely recommend ICE Panels. They're fast, efficient, and they provide an excellent finished product – high R-value walls with 100% thermal break."



BYRON JONES
BGJ CONSTRUCTION | KAMLOOPS, BC

"One thing that people don't often think about is the cost of the utilities. Greenstone ICE Panels are really good at keeping your house comfortable and your utility bills affordable. The tenants are finding that the heating costs are super low. I would recommend ICE Panels because it's a great concept, tenants love them, and they're easy to lease."



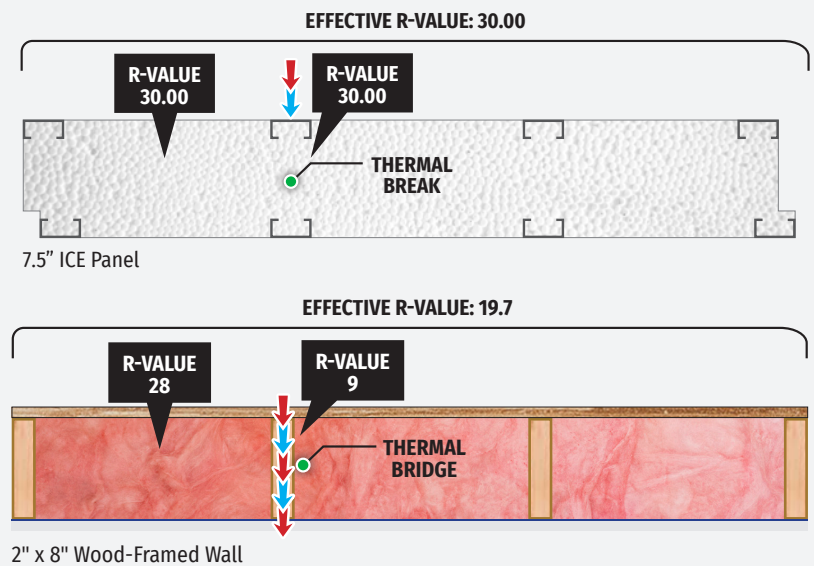
DANA EDMUNDSON
RHINO PROPERTY MANAGEMENT | BRANDON, MB

"From a construction standpoint, ICE Panels are prefabricated, pre-engineered and panelized, so they're very quick to erect. My design options were not limited at all with the ICE Panels, with Greenstone engineering the panels to accommodate my design goals. This product is fire-resistant and a true plumb brick panel. I would definitely use ICE Panels again."



LUIS CEVADA
HOMEOWNER | BRAMPTON, ON

CONSISTENT
R-VALUES IN
YOUR WALLS



ORDER YOUR PACKAGE NOW!

Start building with ICE Panels. Our knowledgeable project team is here for you. Connect with us to get started.

LEARN MORE AT: [GSBP.CA/PACKAGES](https://gsbp.ca/packages)

✉ Email us at info@gsbp.ca