

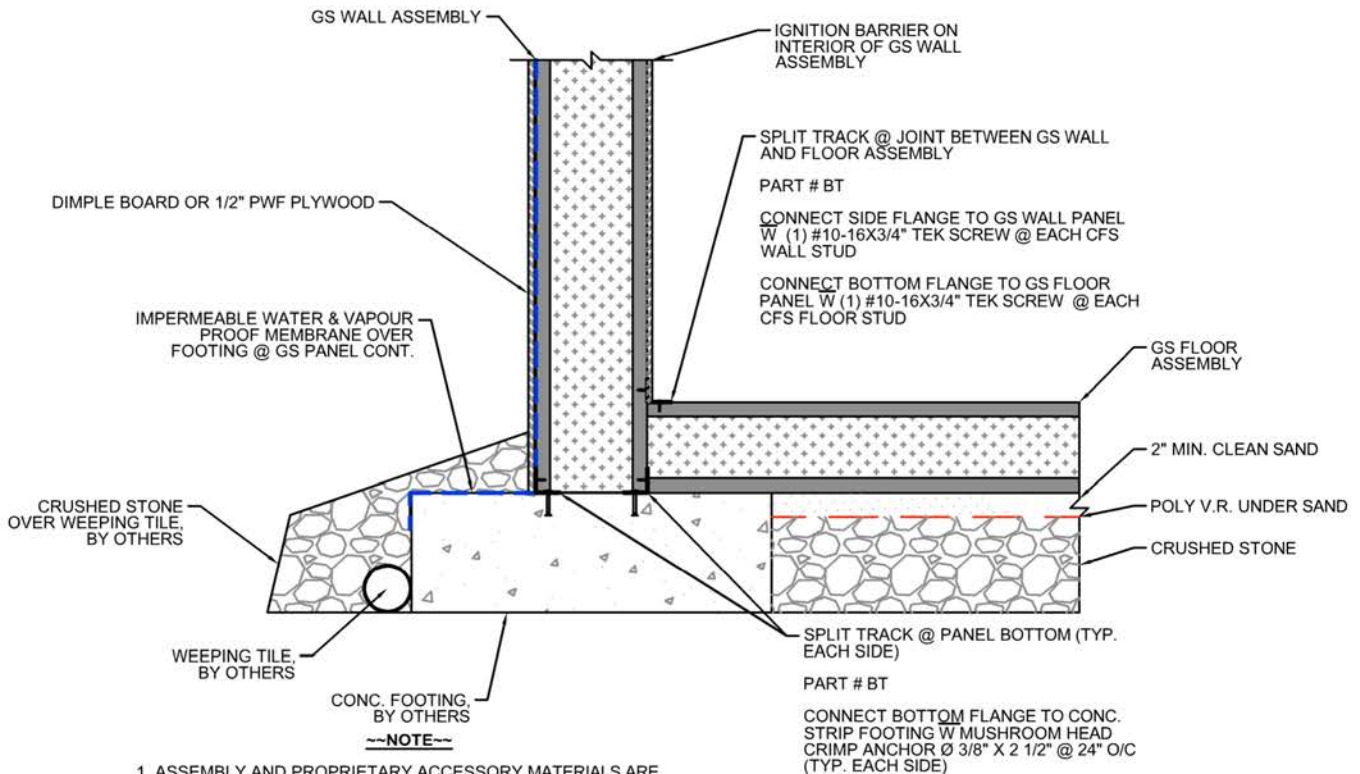


**GREENSTONE**  
BUILDING PRODUCTS



# STANDARD CONNECTION DETAILS SAMPLE DOCUMENT

UPDATED AS OF 2023.04.04



1. ASSEMBLY AND PROPRIETARY ACCESSORY MATERIALS ARE NOT SPECIFICALLY ENDORSED BY GREENSTONE BUILDING PRODUCTS. DRAWING IS INTENDED TO BE A MINIMUM GUIDELINE FOR DESIGN CONSIDERATIONS. FULL ASSEMBLY TO BE SPECIFIED BY PROJECT ARCHITECT.

2. PLEASE REFER TO GREENSTONE BUILDING PRODUCTS "STANDARD PANEL ASSEMBLY MANUAL" FOR CONSTRUCTION METHODS.

3. INSTALL CONNECTION PLATES IMMEDIATELY ABOVE BASE TRACK.

4. MITRE CUT TRACK @ CORNERS

5. FASTENER SPACING TO MATCH WALL STUD SPACING (MAX. 16" O/C).

6. EOR TO CONFIRM TYPE AND SPACING OF FASTENERS BETWEEN TRACK, WALL PANEL, AND SUBSTRATE FOR PROJECT SPECIFIC STRUCTURAL LOAD TRANSFER

CONNECT BOTTOM FLANGE TO CONC. STRIP FOOTING W MUSHROOM HEAD CRIMP ANCHOR Ø 3/8" X 2 1/2" @ 24" O/C (TYP. EACH SIDE)

CONNECT SIDE FLANGE TO GS WALL PANEL W (1) #10-16x3/4" TEK SCREW @ EACH CFS STUD (TYP. EACH SIDE)

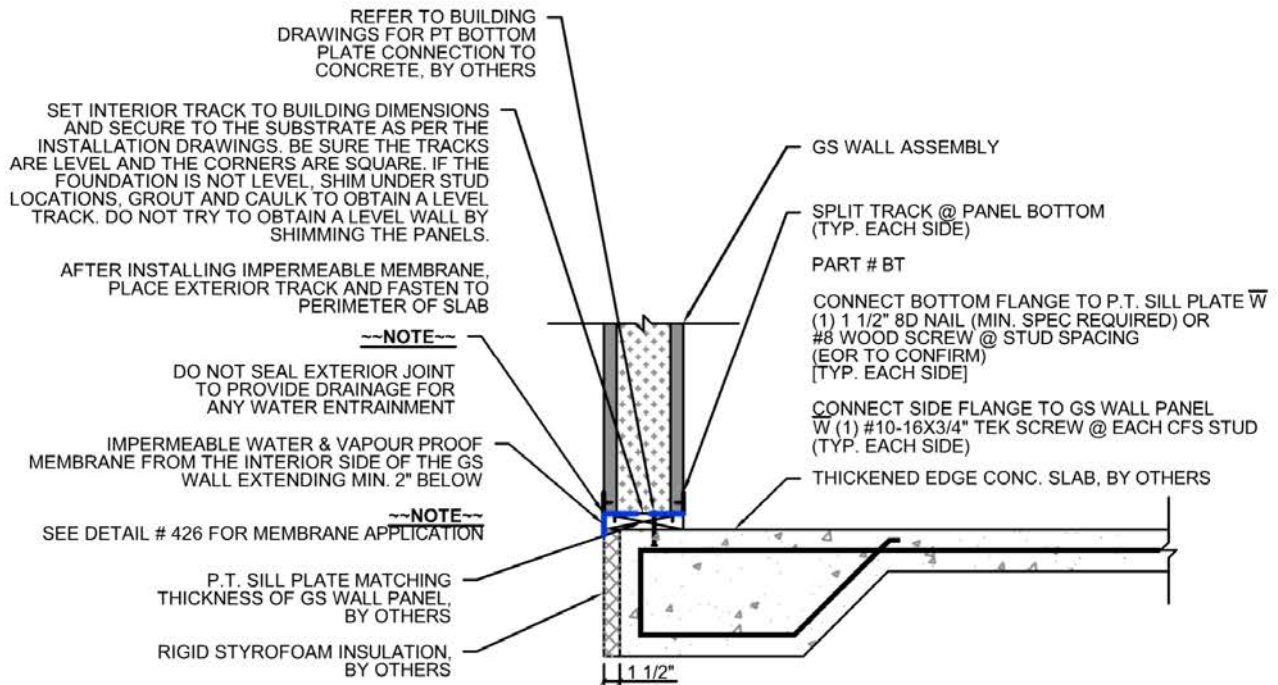
GS FLOOR INSTALLATION ONTO CONC. FOOTING (SECTION)

N.T.S. 203

# STANDARD CONNECTION DETAILS

2023.04.04 | LATEST REVISION

GSBP.CA | GREENSTONE BUILDING PRODUCTS



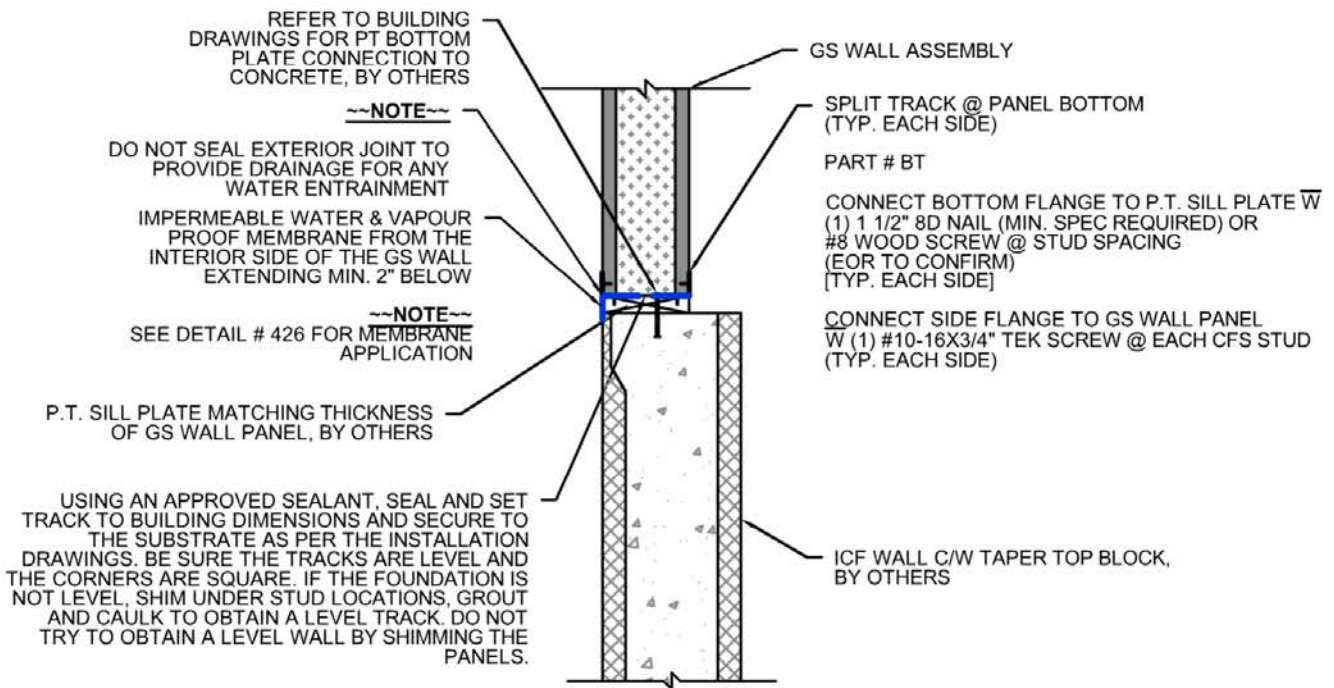
## GS SPLIT TRACK ON DOUBLE PT PLATE INSTALLATION ONTO CONC. SLAB (SECTION)

N.T.S. **207**

---NOTE---

FASTENER SPACING TO MATCH WALL STUD SPACING (MAX. 16" O/C)

EOR TO CONFIRM TYPE AND SPACING OF FASTENERS BETWEEN TRACK, WALL PANEL, AND SUBSTRATE FOR PROJECT SPECIFIC STRUCTURAL LOAD TRANSFER



**GS SPLIT TRACK ON PT PLATE  
INSTALLATION ONTO ICF (SECTION)**

N.T.S.

222

~NOTE~

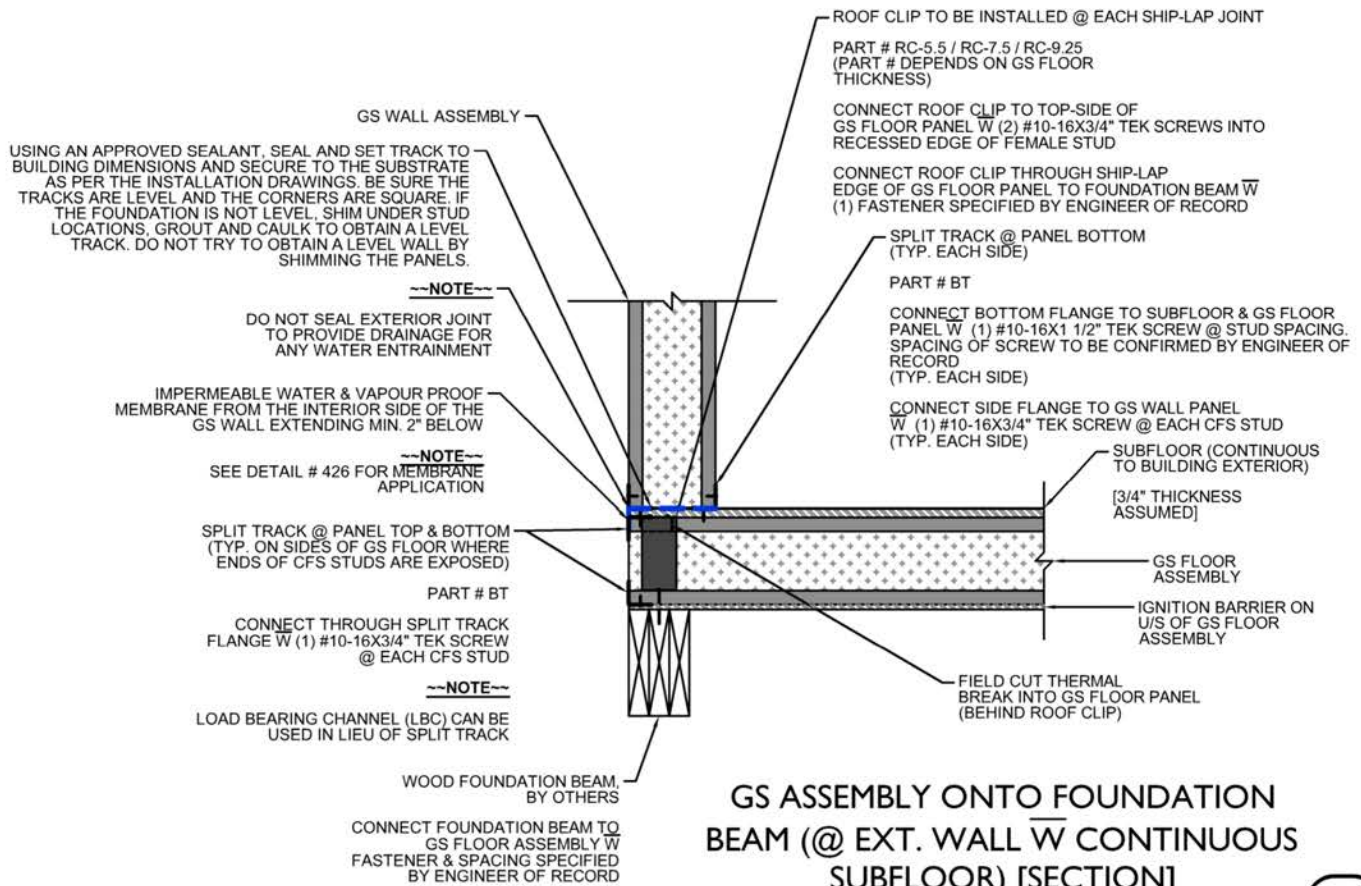
FASTENER SPACING TO MATCH WALL STUD SPACING (MAX. 16" O/C)

EOR TO CONFIRM TYPE AND SPACING OF FASTENERS BETWEEN TRACK, WALL PANEL, AND SUBSTRATE FOR PROJECT SPECIFIC STRUCTURAL LOAD TRANSFER

# STANDARD CONNECTION DETAILS

2023.04.04 | LATEST REVISION

GSBP.CA | GREENSTONE BUILDING PRODUCTS

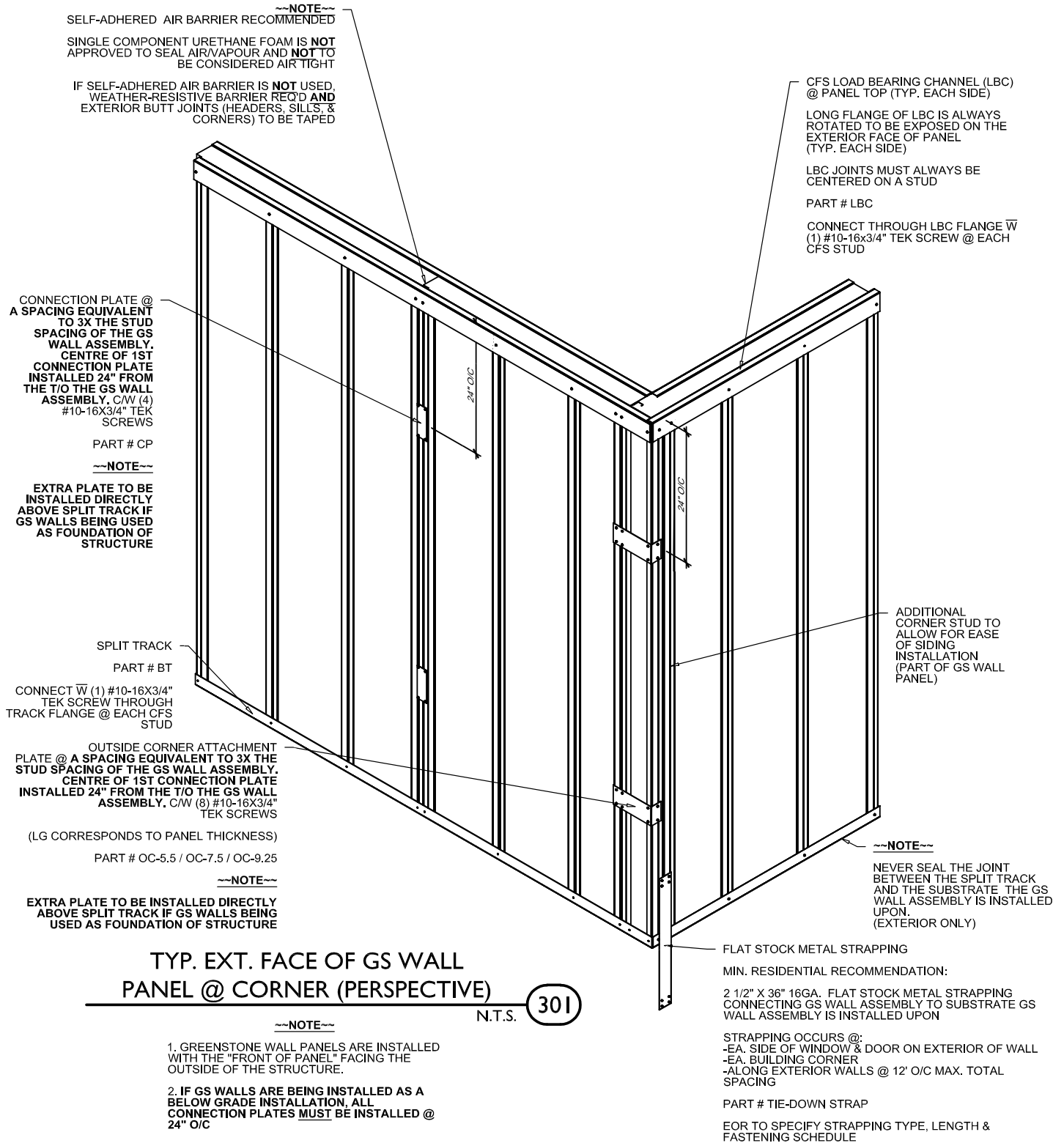


## GS ASSEMBLY ONTO FOUNDATION BEAM (@ EXT. WALL W CONTINUOUS SUBFLOOR) [SECTION]

N.T.S. **250**

--NOTE--  
FASTENER SPACING TO MATCH WALL STUD SPACING (MAX. 16" O/C)

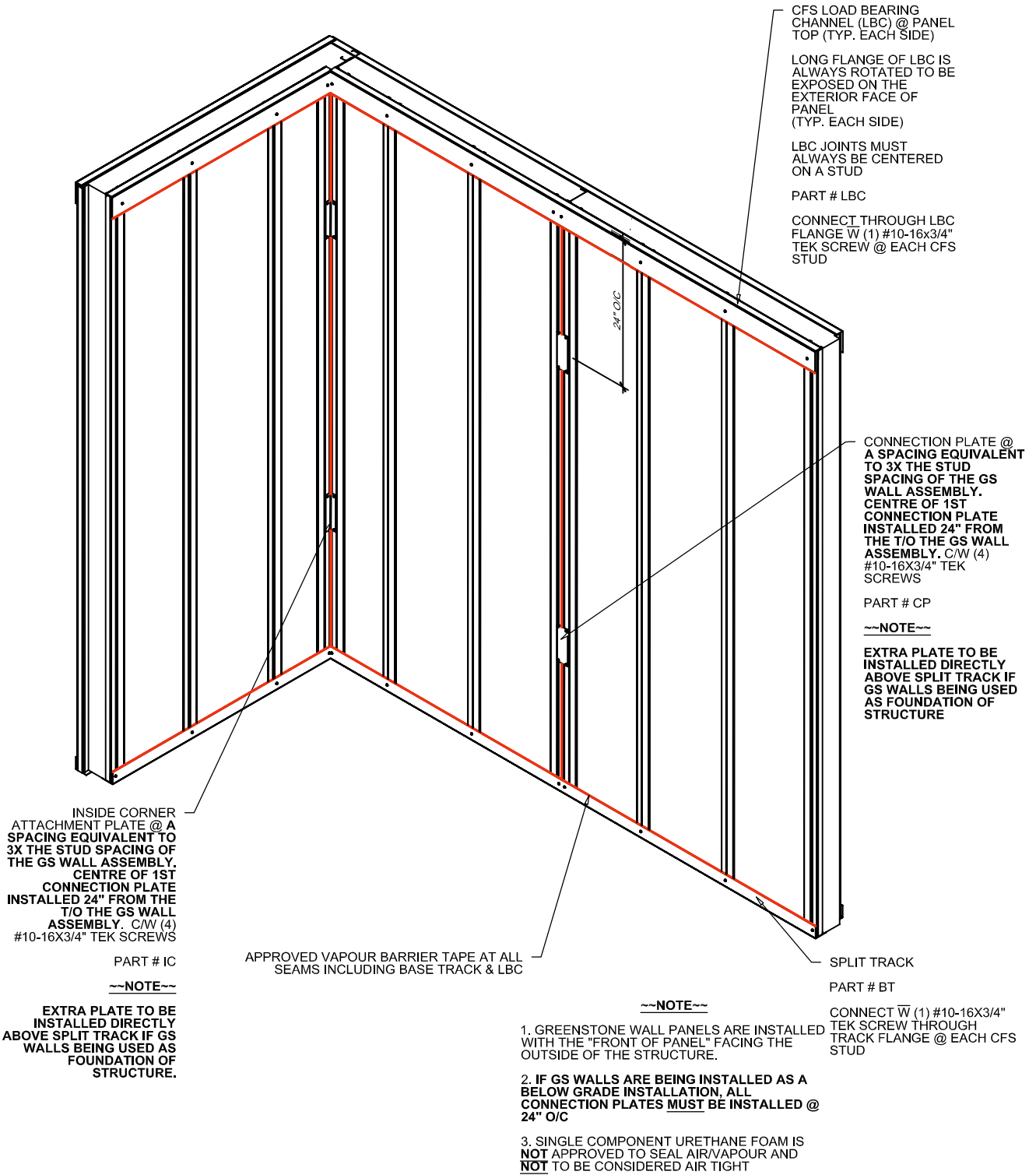
EOR TO CONFIRM TYPE AND SPACING OF FASTENERS BETWEEN TRACK, WALL PANEL, AND SUBSTRATE FOR PROJECT SPECIFIC STRUCTURAL LOAD TRANSFER



# STANDARD CONNECTION DETAILS

2023.04.04 | LATEST REVISION

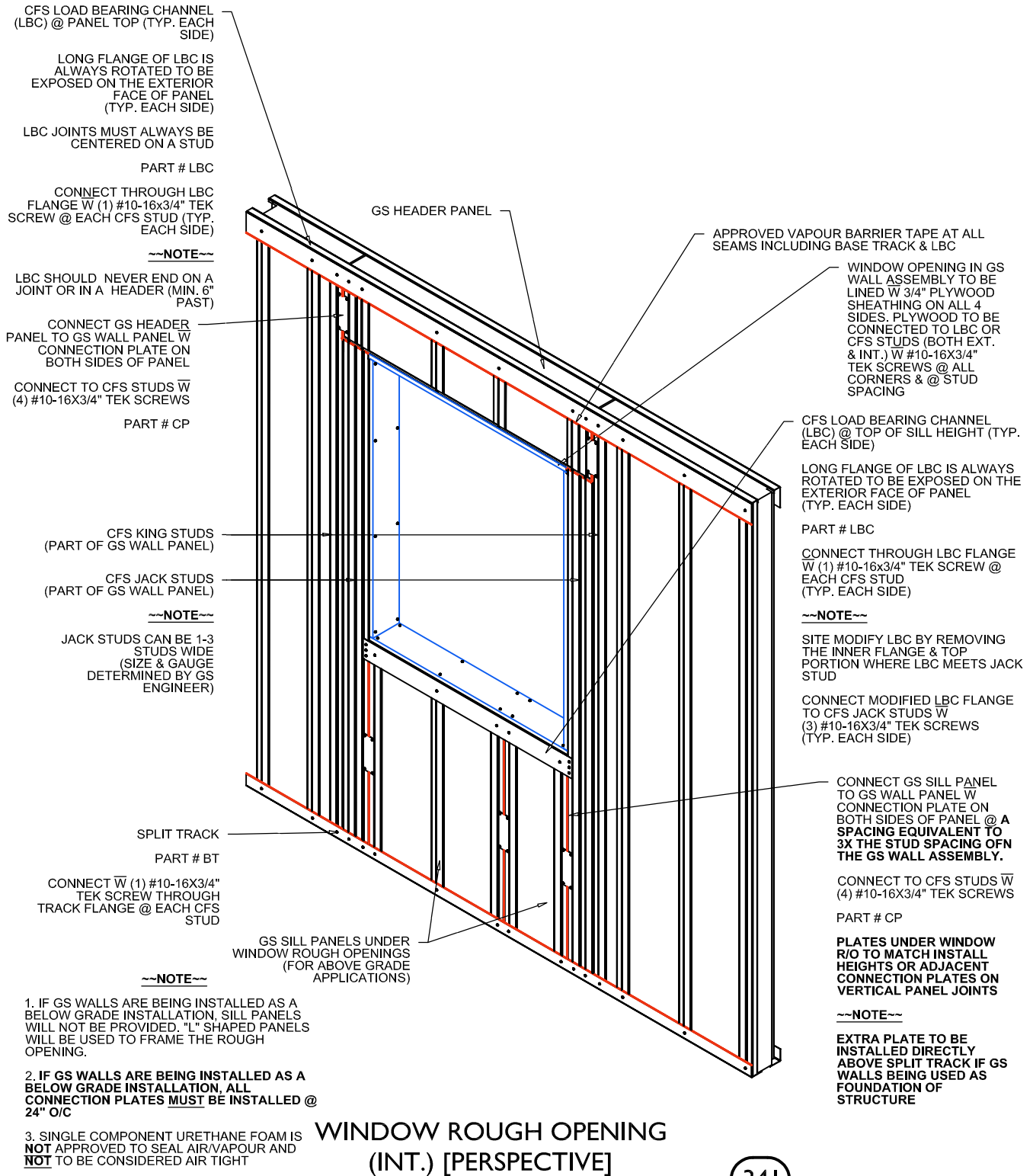
GSBP.CA | GREENSTONE BUILDING PRODUCTS



TYP. INT. FACE OF GS WALL  
 PANEL @ CORNER (PERSPECTIVE)

302

N.T.S.



### WINDOW ROUGH OPENING (INT.) [PERSPECTIVE]

N.T.S.

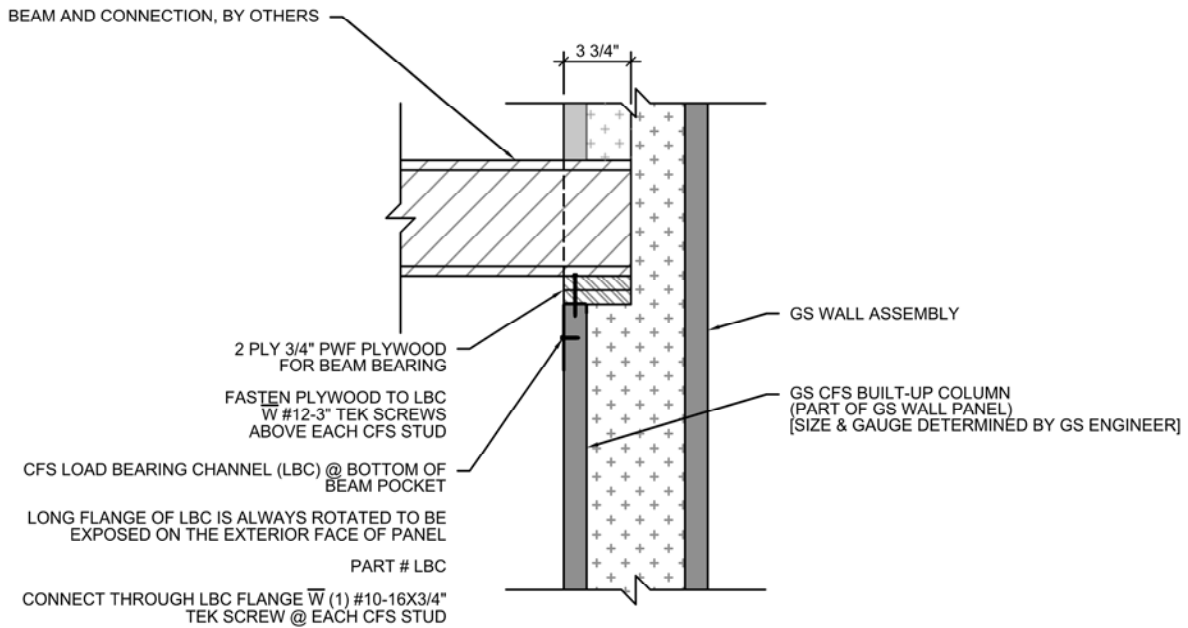
341



# STANDARD CONNECTION DETAILS

2023.04.04 | LATEST REVISION

GSBP.CA | GREENSTONE BUILDING PRODUCTS



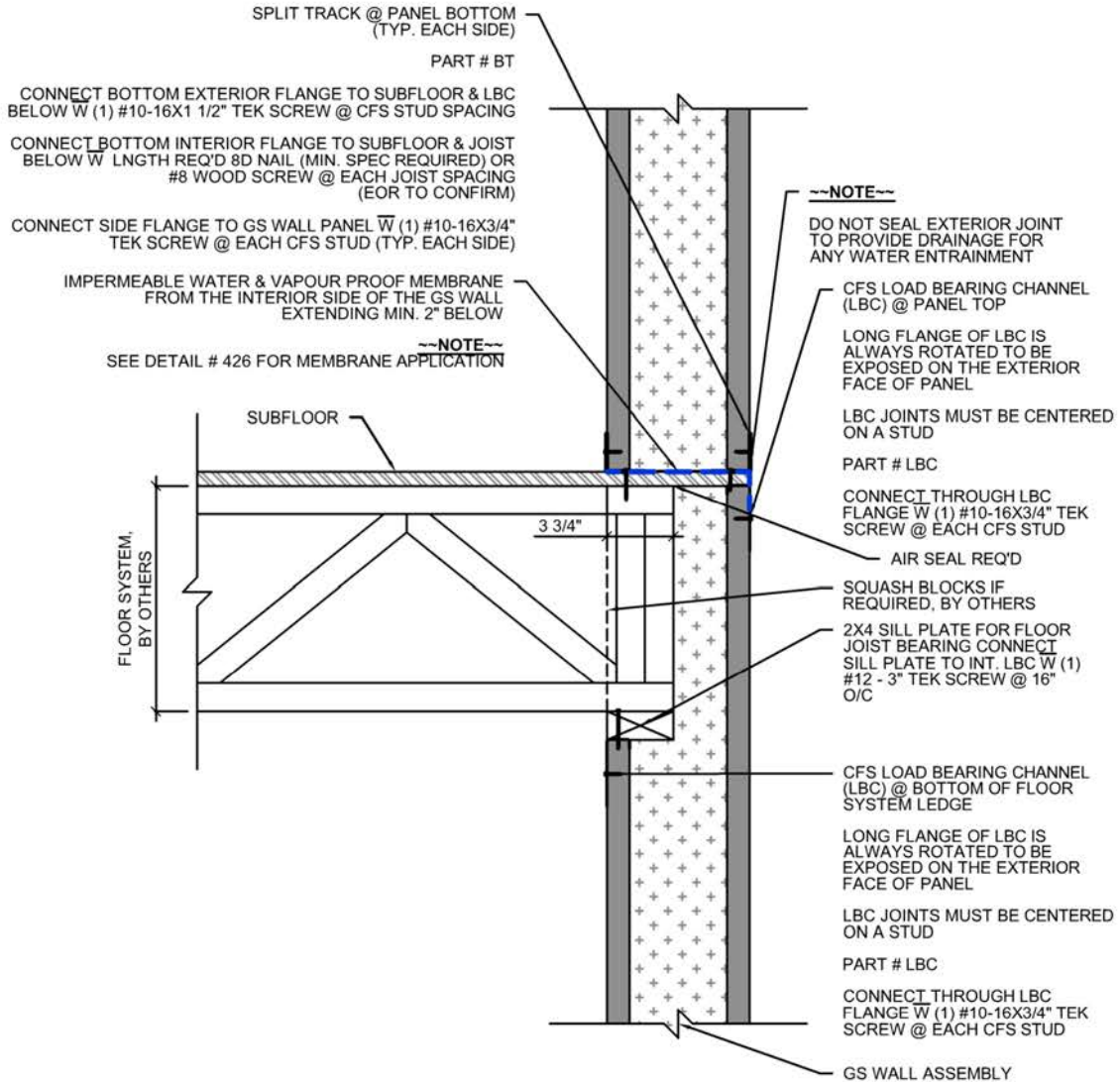
## PARTIAL BEAM POCKET (SECTION)

N.T.S.

403

~NOTE~

UNDER HEAVIER LOADS A STEEL PLATE OR PIECE OF LVL SHIM MAY BE RECOMMENDED BY THE ENGINEER OF RECORD IN LIEU OF 2 PLY 3/4" PWF PLYWOOD FOR BEAM BEARING



FLOOR LEDGE  
(BOTTOM CHORD BEARING)  
[SECTION]

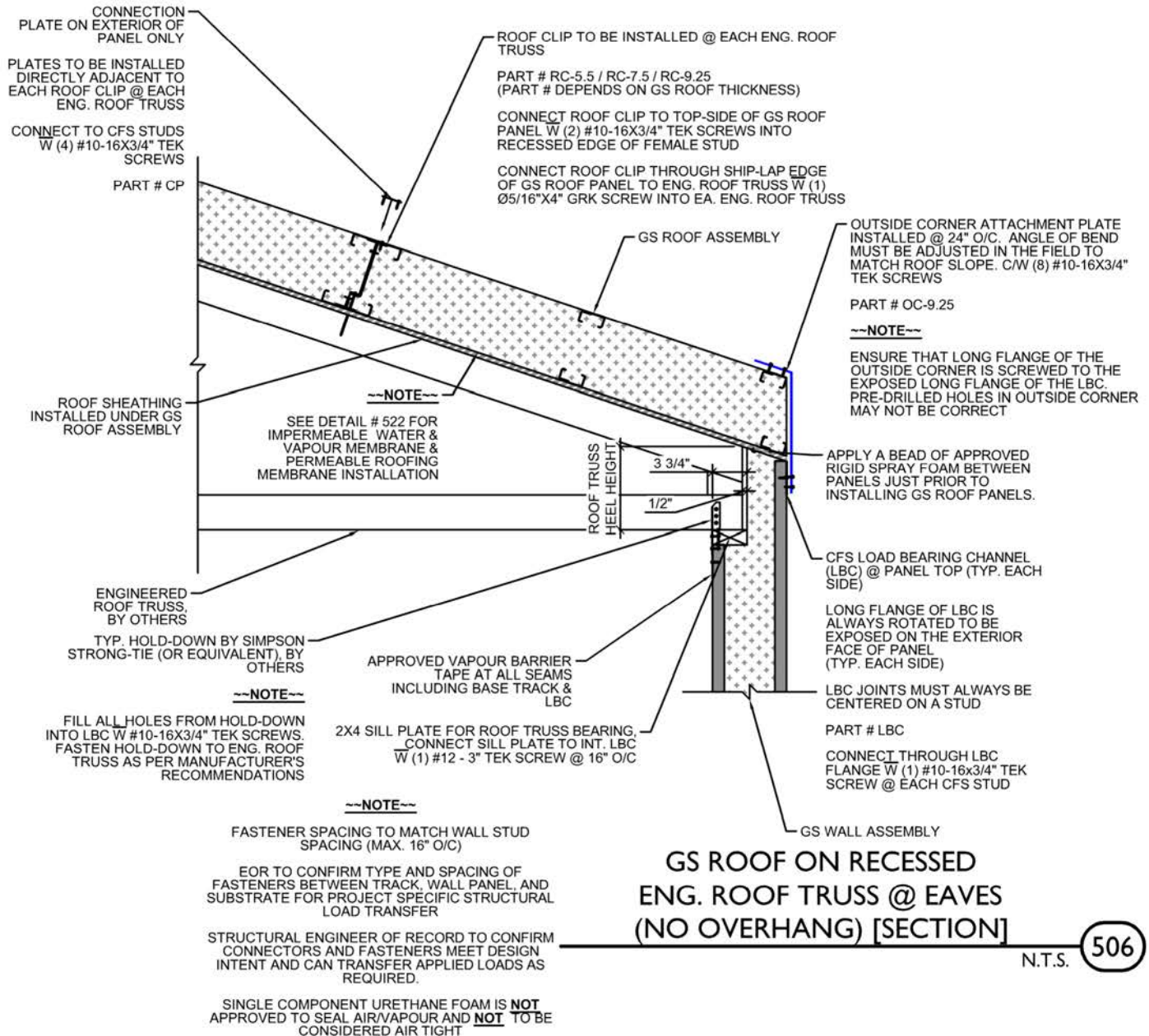
N.T.S. **430**

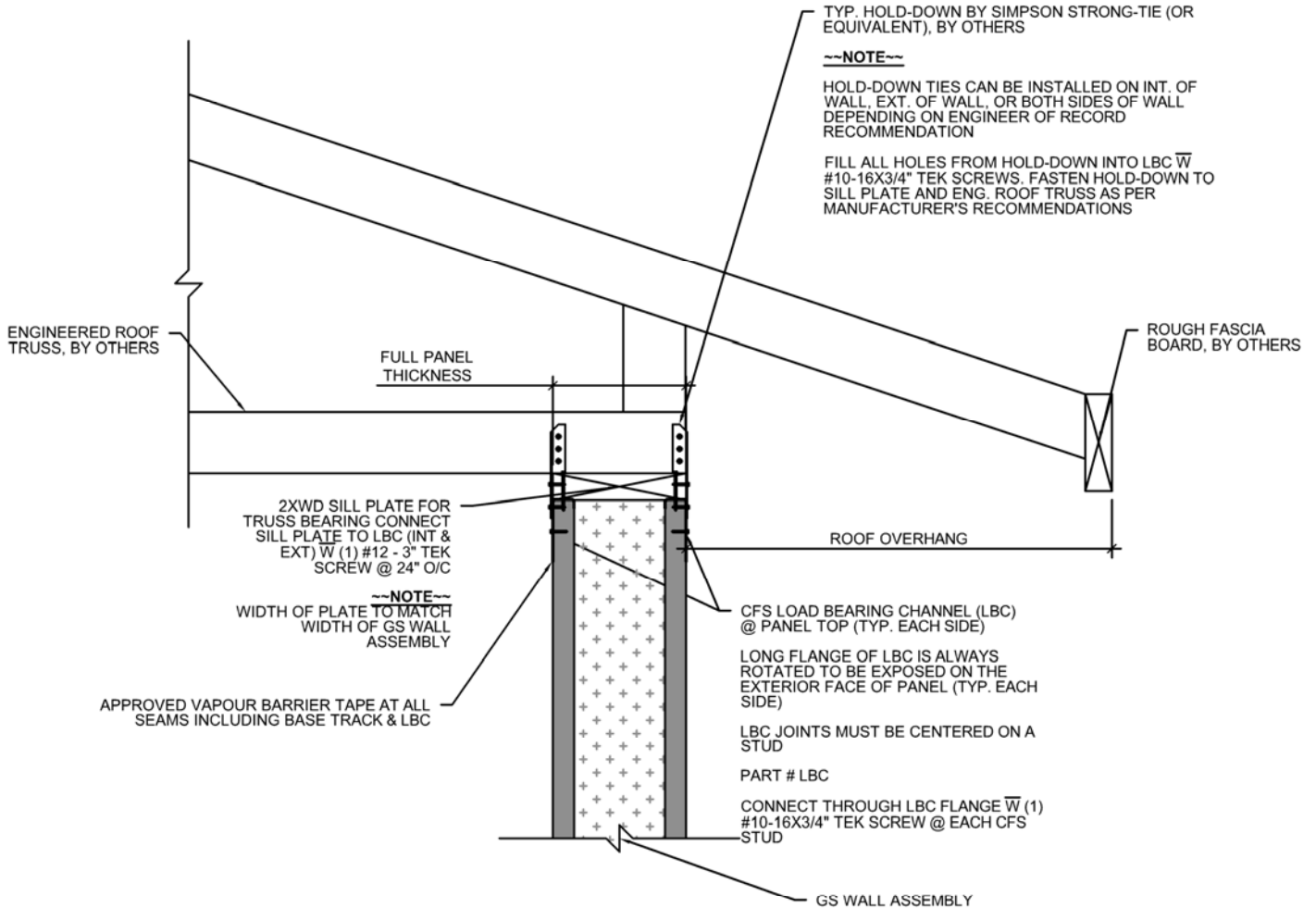
**NOTE**  
FASTENER SPACING TO MATCH WALL STUD SPACING (MAX. 16" O/C)  
EOR TO CONFIRM TYPE AND SPACING OF FASTENERS BETWEEN TRACK, WALL PANEL, AND SUBSTRATE FOR PROJECT SPECIFIC STRUCTURAL LOAD TRANSFER

# STANDARD CONNECTION DETAILS

2023.04.04 | LATEST REVISION

GSBP.CA | GREENSTONE BUILDING PRODUCTS





**FULL BEARING ROOF W SILL PLATE (SECTION)**

N.T.S. **508**

**~NOTE~**  
 FASTENER SPACING TO MATCH WALL STUD SPACING (MAX. 16" O/C)  
 EOR TO CONFIRM TYPE AND SPACING OF FASTENERS BETWEEN TRACK, WALL PANEL, AND SUBSTRATE FOR PROJECT SPECIFIC STRUCTURAL LOAD TRANSFER  
 STRUCTURAL ENGINEER OF RECORD TO CONFIRM CONNECTORS AND FASTENERS MEET DESIGN INTENT AND CAN TRANSFER APPLIED LOADS AS REQUIRED.  
 SINGLE COMPONENT URETHANE FOAM IS **NOT** APPROVED TO SEAL AIR/VAPOUR AND **NOT** TO BE CONSIDERED AIR TIGHT