

GREENSTONE
BUILDING PRODUCTS



ACCESSORY CATALOGUE

UPDATED AS OF 2024.03.20

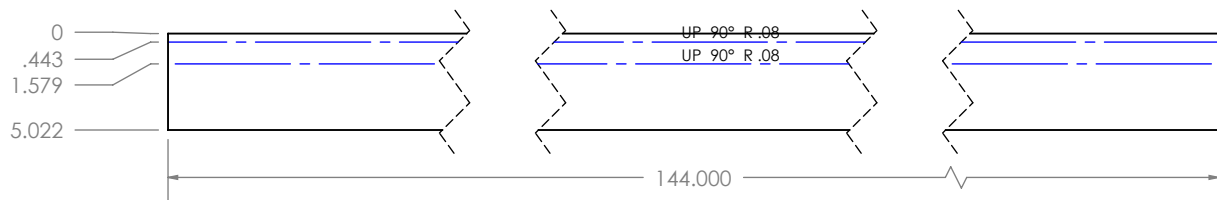
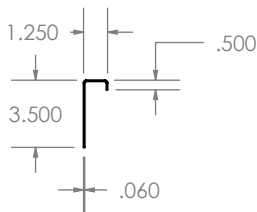
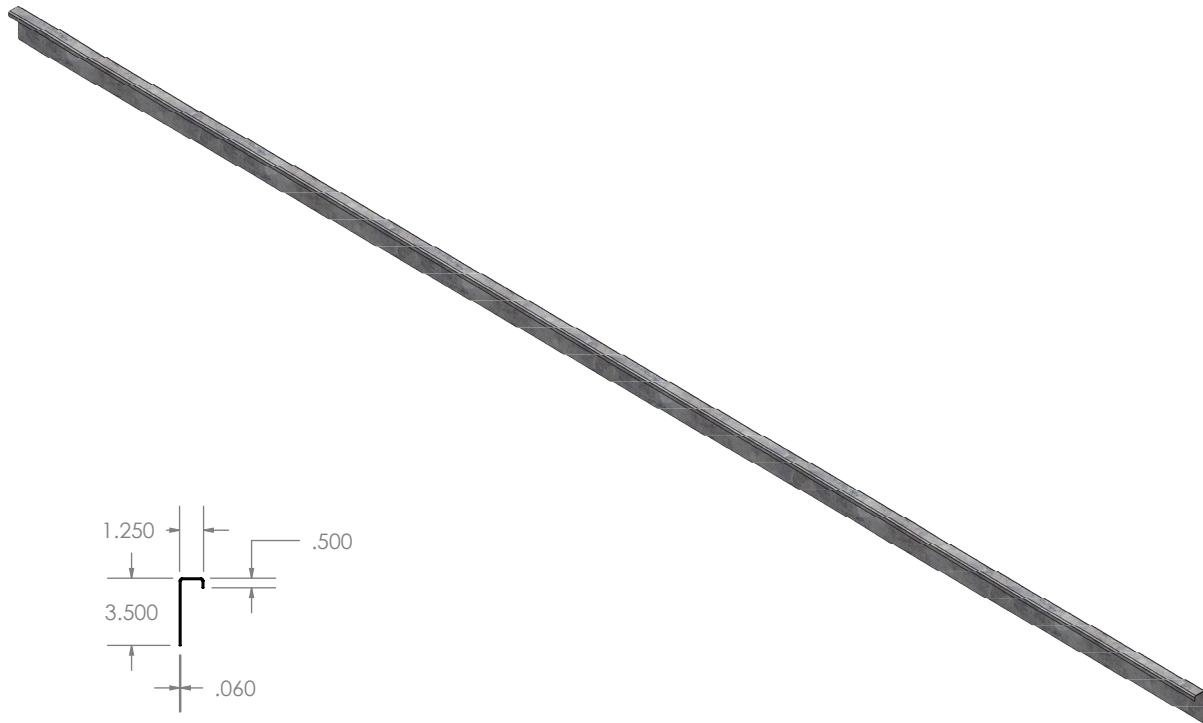
TABLE OF CONTENTS

LOAD BEARING CHANNEL	5	PANELIZING CLIP-5	27
CONNECTION PLATE	6	PANELIZING CLIP-6	28
INSIDE CORNER	7	PANELIZING CLIP-7	29
OUTSIDE CORNER 5.5	8	DIAPHRAGM CLIP	30
OUTSIDE CORNER 7.5	9		
OUTSIDE CORNER 9.5	10		
OUTSIDE CORNER 45	11		
BOTTOM SPLIT TRACK	12		
ROOF CLIP 5.5	13		
ROOF CLIP 7.5	14		
ROOF CLIP 9.25	15		
HEADER BASE PLATE SINGLE-JOIST	16		
HEADER BASE PLATE DOUBLE-JOIST	17		
HEADER BASE PLATE TRIPLE-JOIST	18		
ROOF EAVE OUTSIDE CONNECTION	19		
ROOF RIDGE INSIDE CONNECTION	20		
ROOF RIDGE OUTSIDE CONNECTION	21		
LATERAL WALL BRACE	22		
PANELIZING CLIP SINGLE	23		
PANELIZING CLIP-2	24		
PANELIZING CLIP-3	25		
PANELIZING CLIP-4	26		

LOAD BEARING CHANNEL

PART NO. **LBC-16**

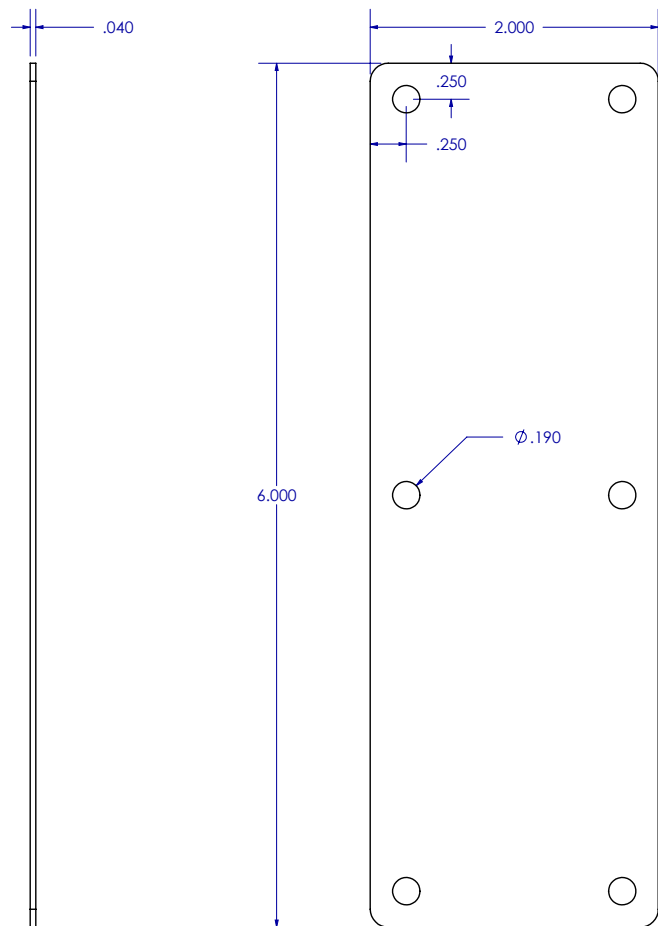
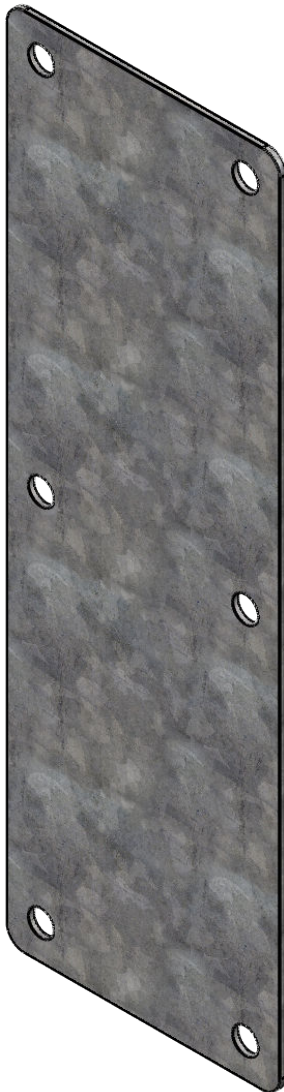
GALVANIZED STEEL - 18GA



CONNECTION PLATE

PART NO. CP

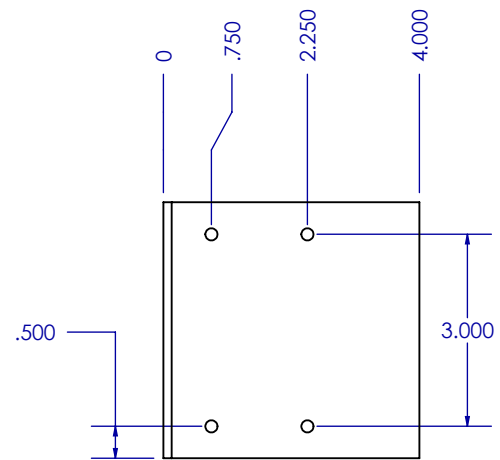
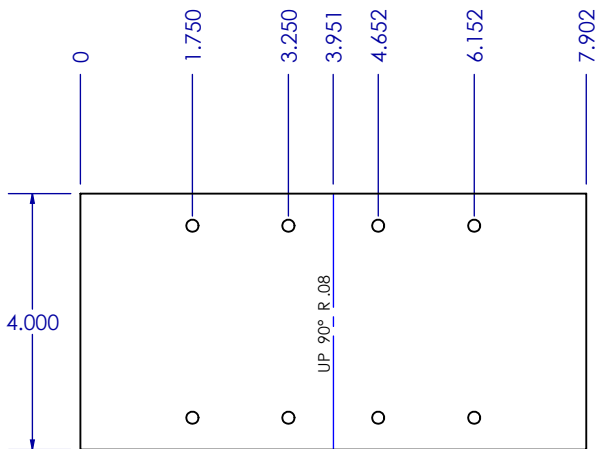
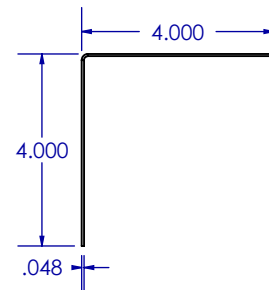
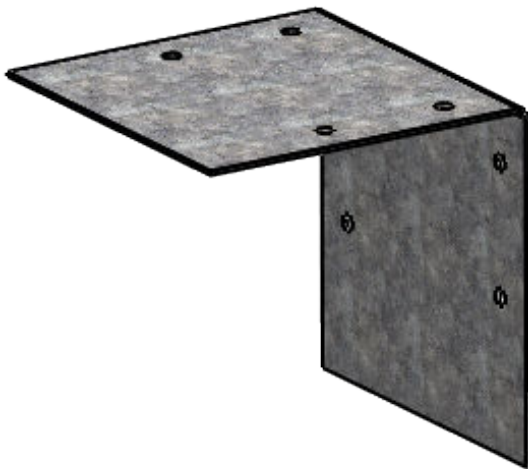
GALVANIZED STEEL - 18GA



INSIDE CORNER

PART NO. IC

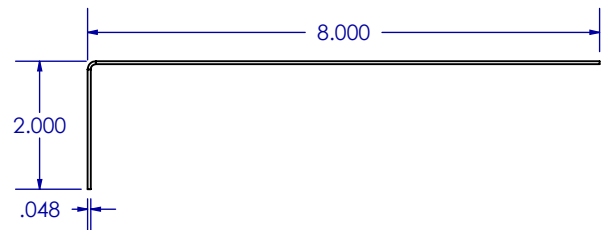
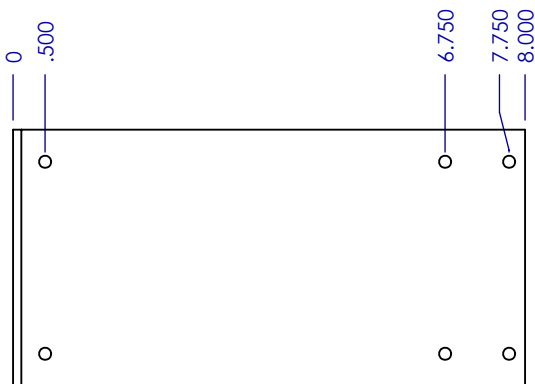
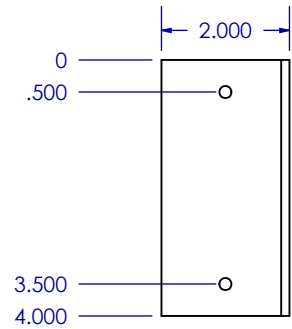
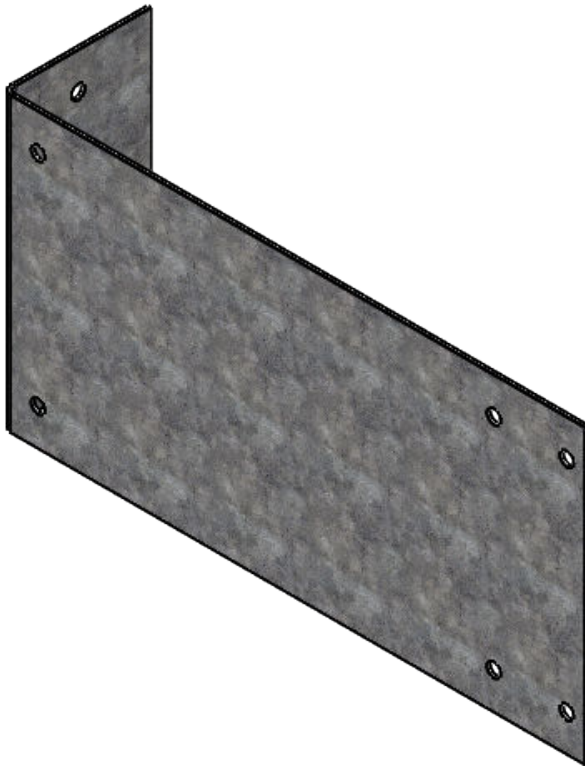
GALVANIZED STEEL - 18GA



OUTSIDE CORNER 5.5

PART NO. OC-5.5

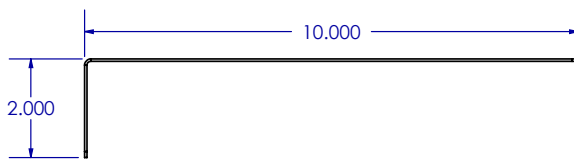
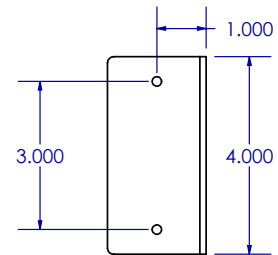
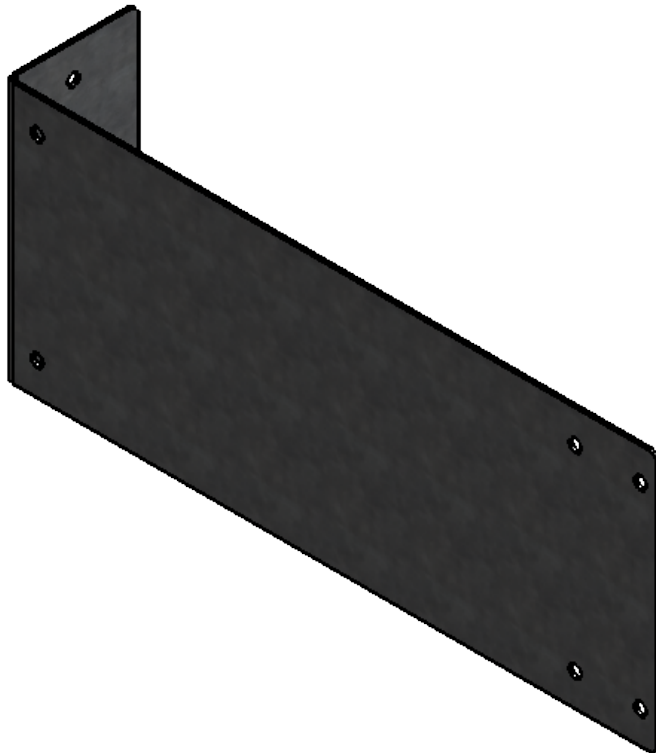
GALVANIZED STEEL - 18GA



OUTSIDE CORNER 7.5

PART NO. OC-7.5

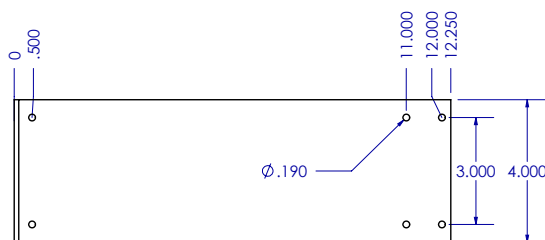
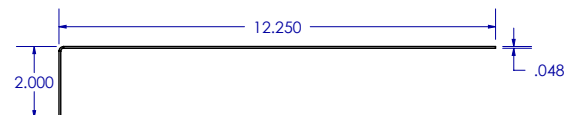
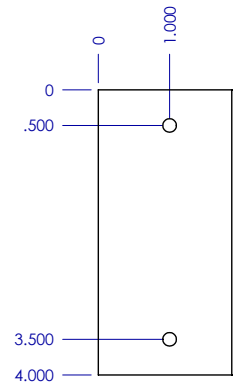
GALVANIZED STEEL - 18GA



OUTSIDE CORNER 9.25

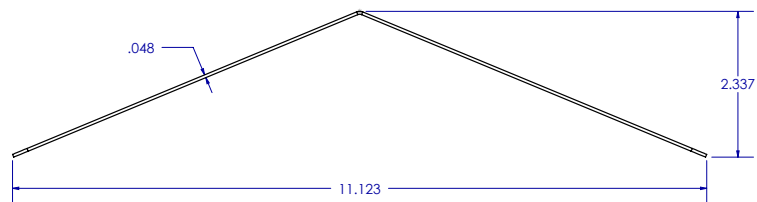
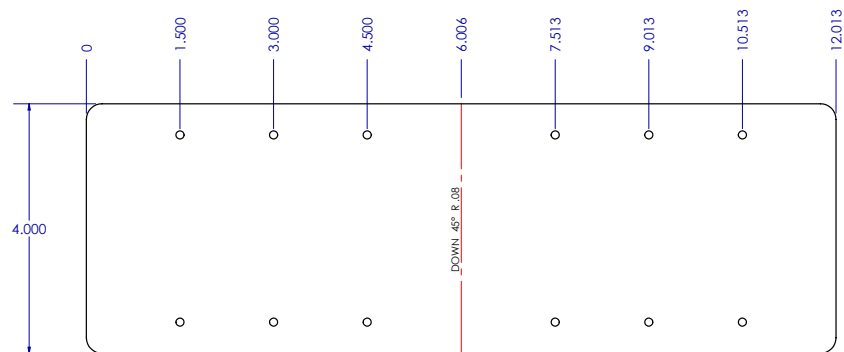
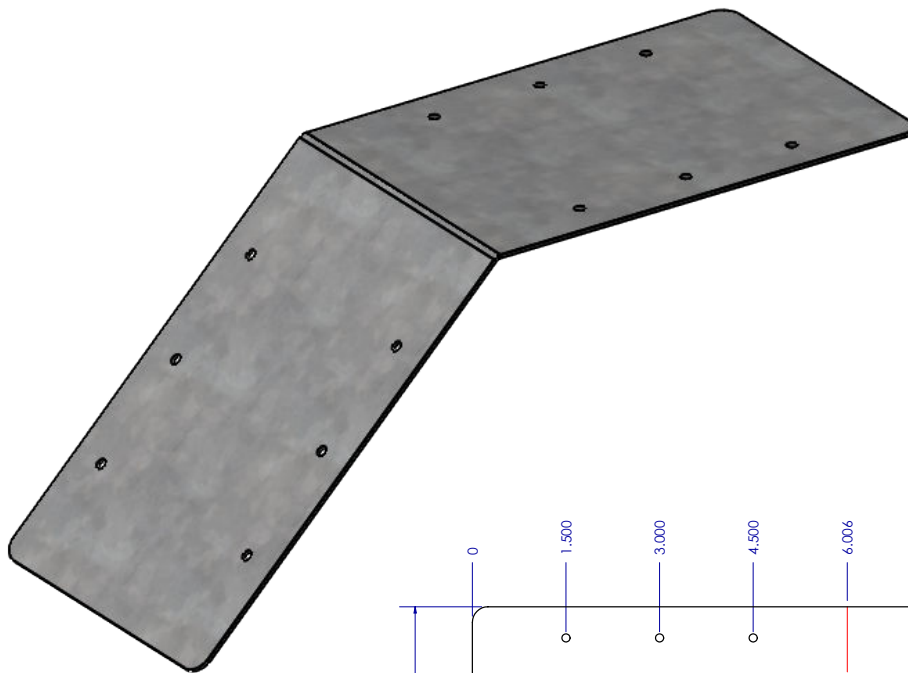
PART NO. OC-9.25

GALVANIZED STEEL - 18GA



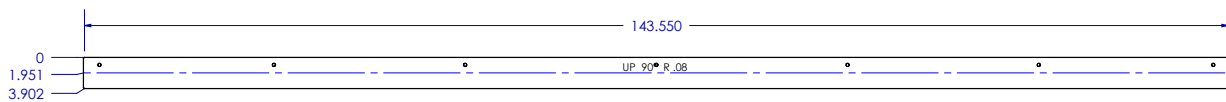
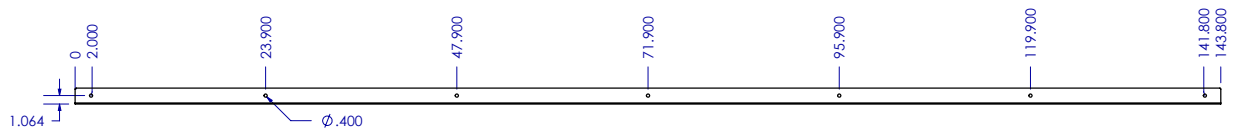
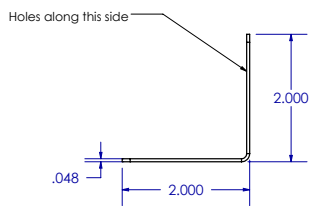
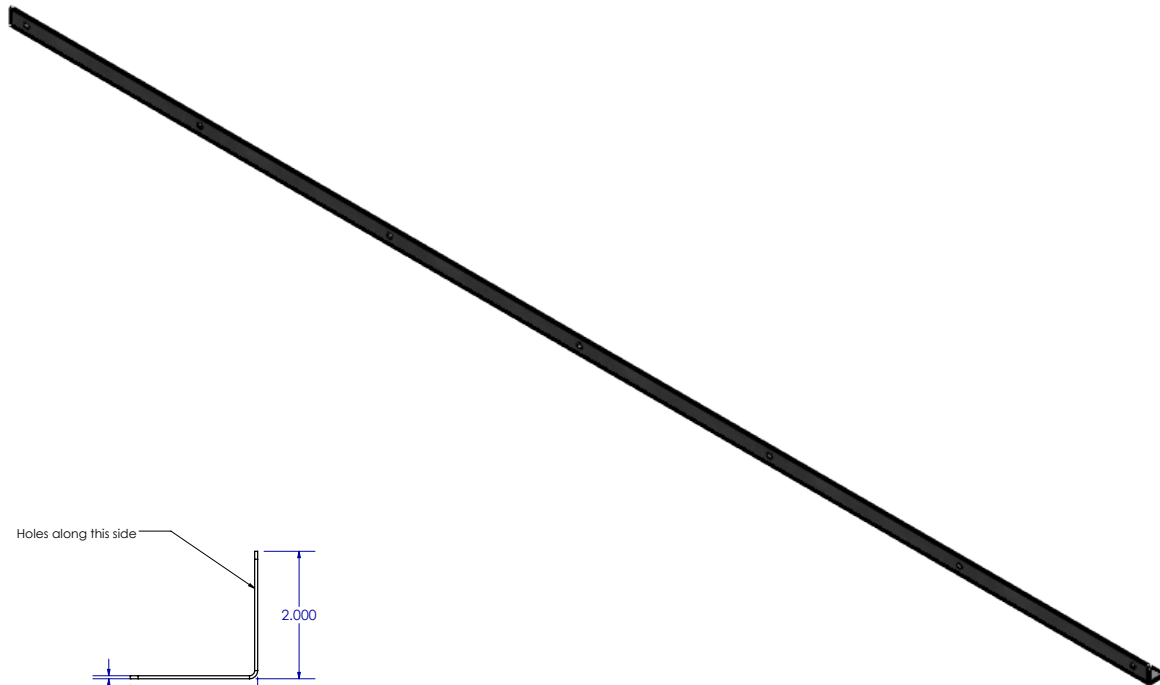
OUTSIDE CORNER 45

PART NO. C-45
GALVANIZED STEEL - 18GA



BOTTOM SPLIT TRACK

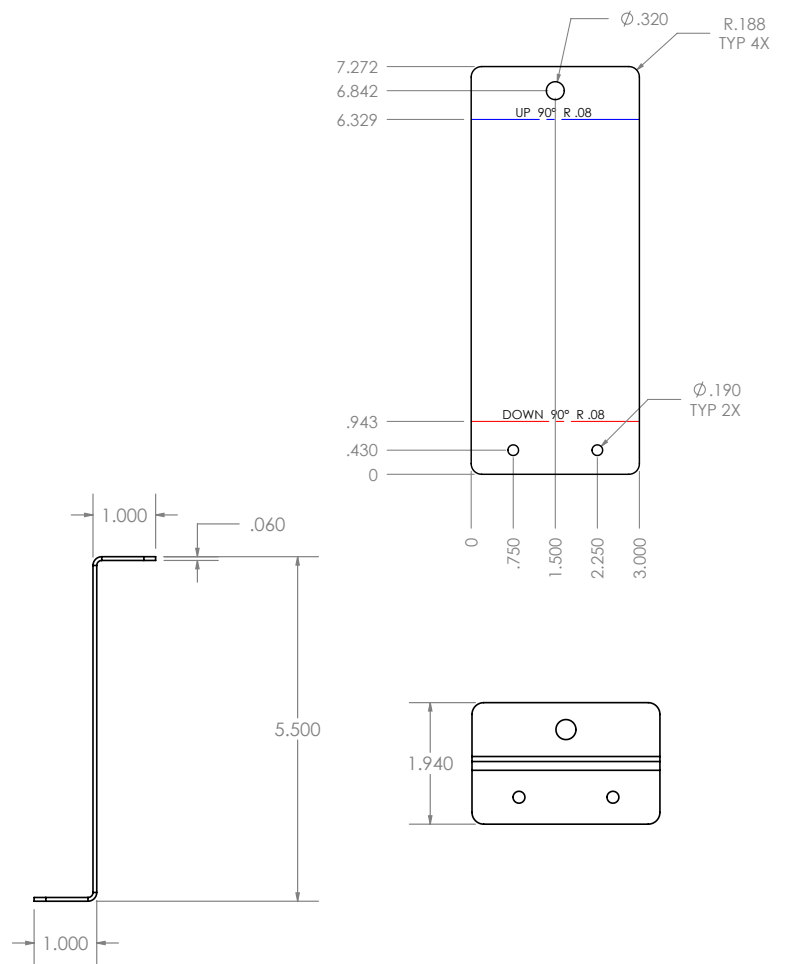
PART NO. BT
GALVANIZED STEEL - 18GA



ROOF CLIP 5.5

PART NO. RC-5.5

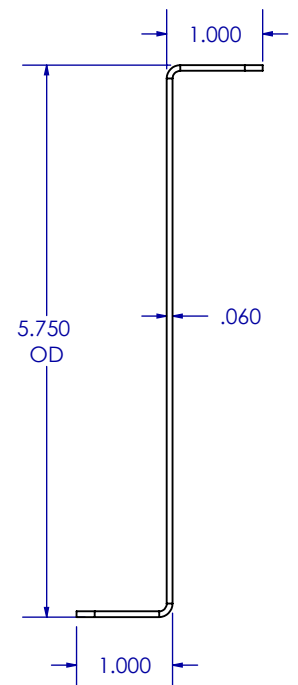
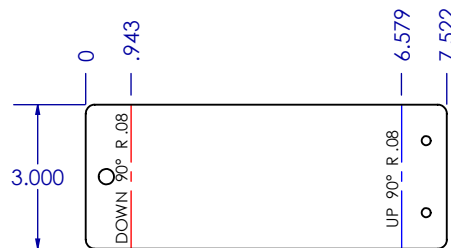
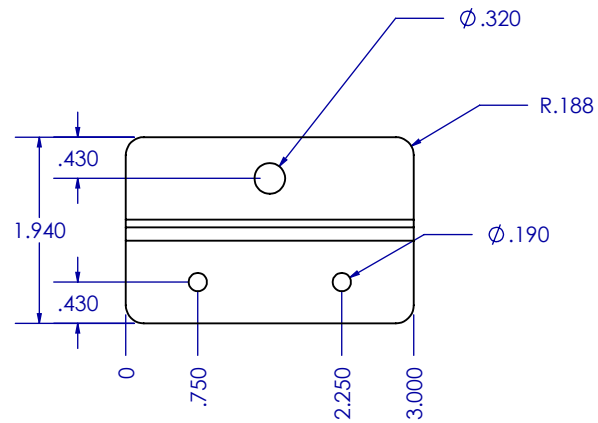
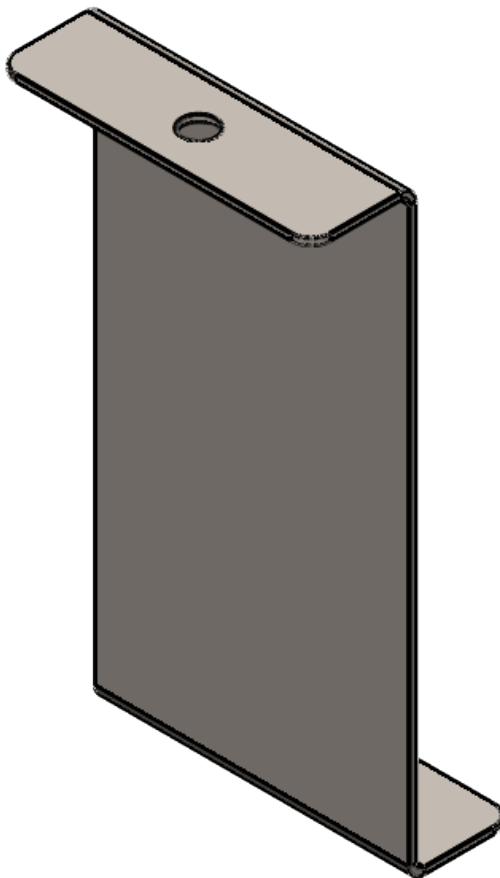
GALVANIZED STEEL - 16GA



ROOF CLIP 7.5

PART NO. RC-7.5

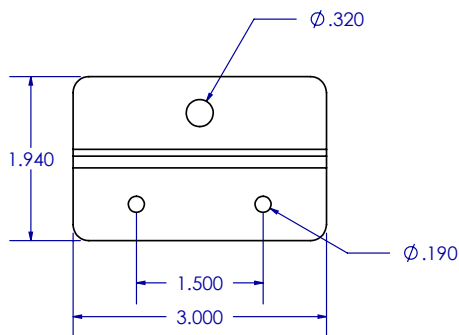
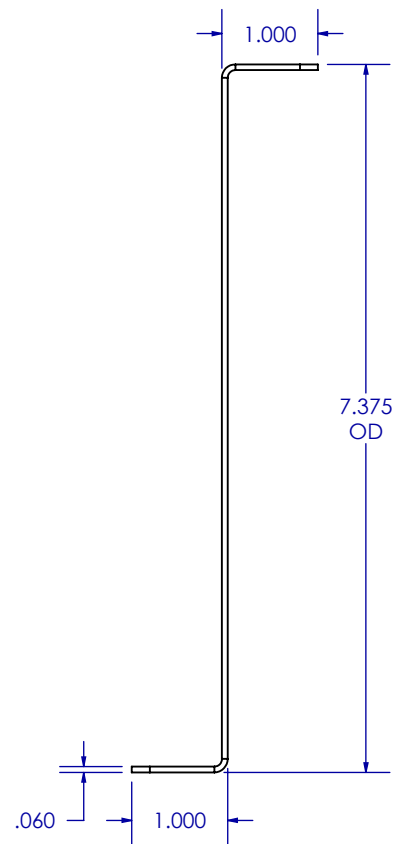
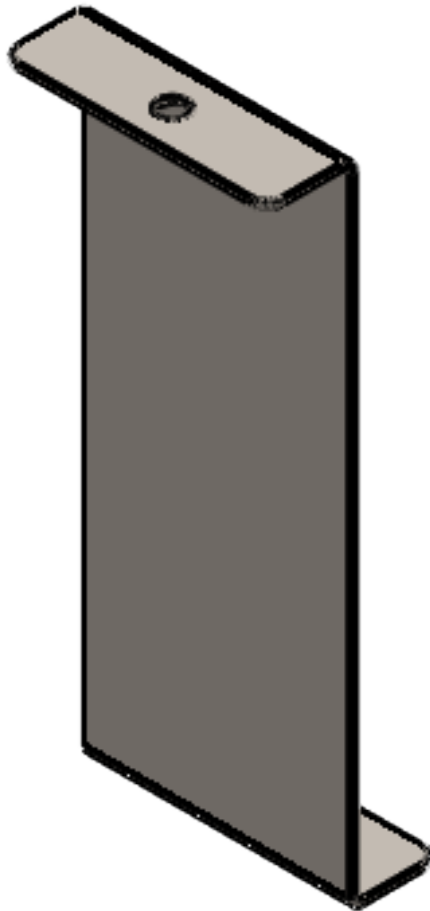
GALVANIZED STEEL - 16GA



ROOF CLIP 9.25

PART NO. RC-9.25

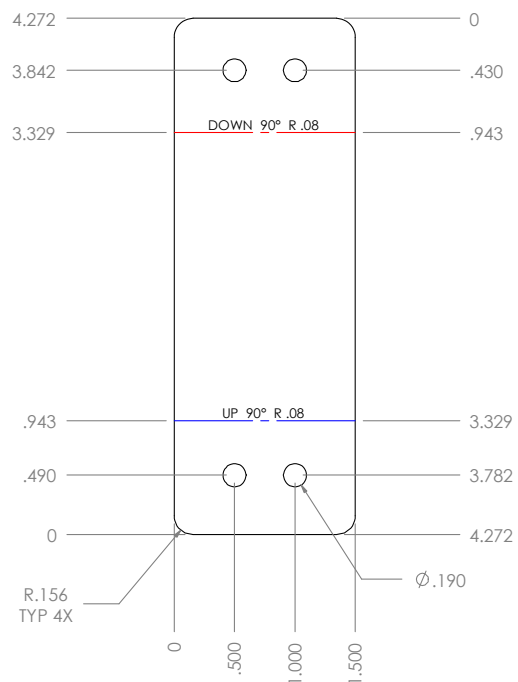
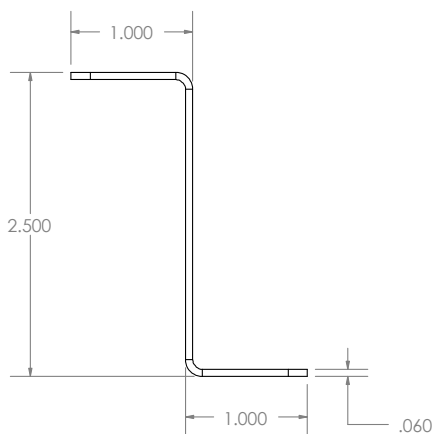
GALVANIZED STEEL - 16GA



HEADER BASE PLATE SINGLE-JOIST

PART NO. HBP-SJ

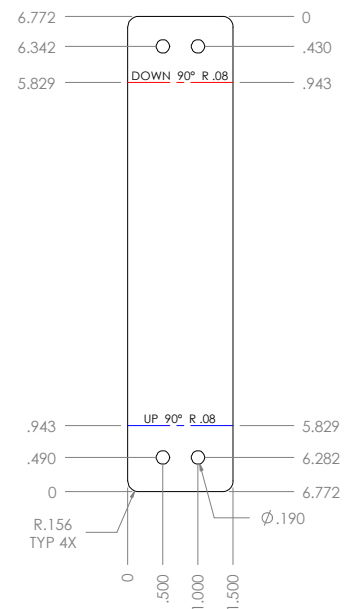
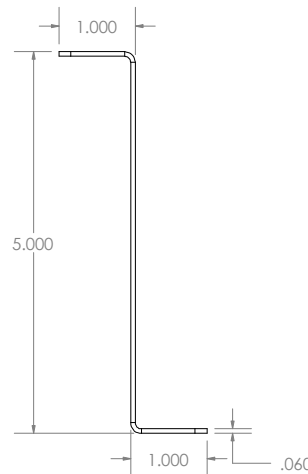
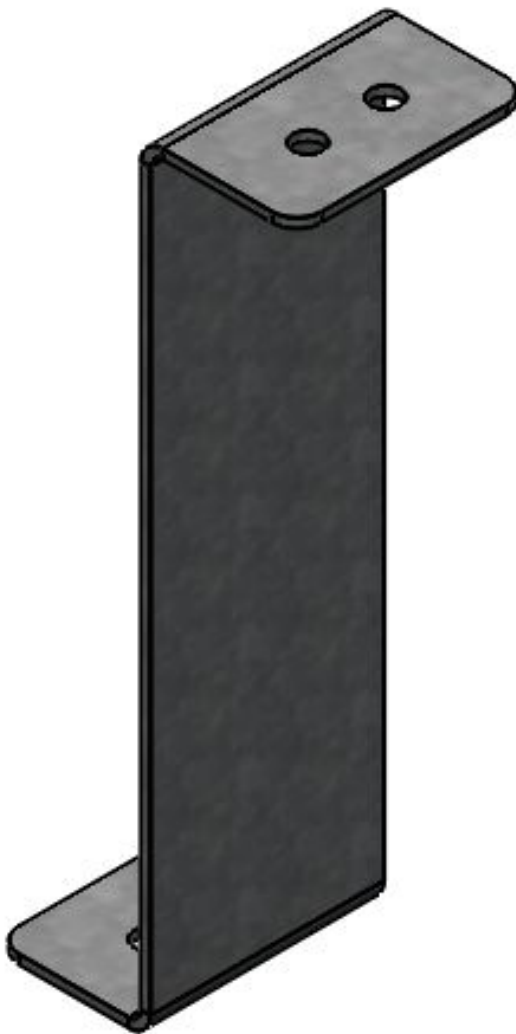
GALVANIZED STEEL - 16GA



HEADER BASE PLATE DOUBLE-JOIST

PART NO. HBP-DJ

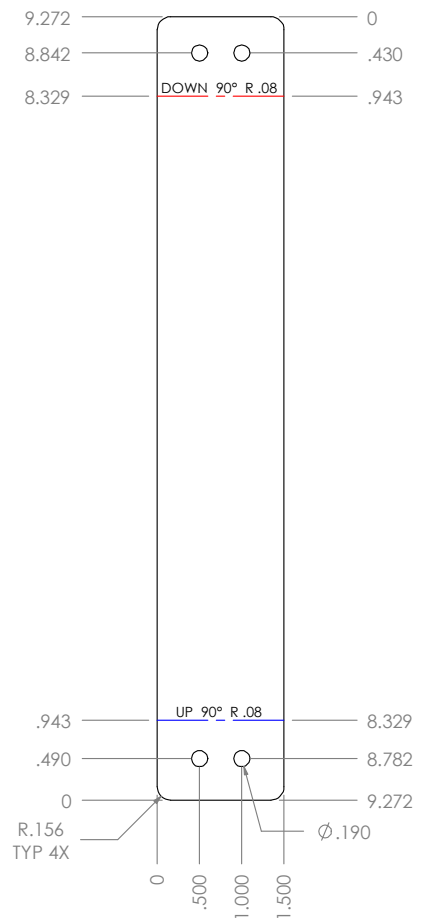
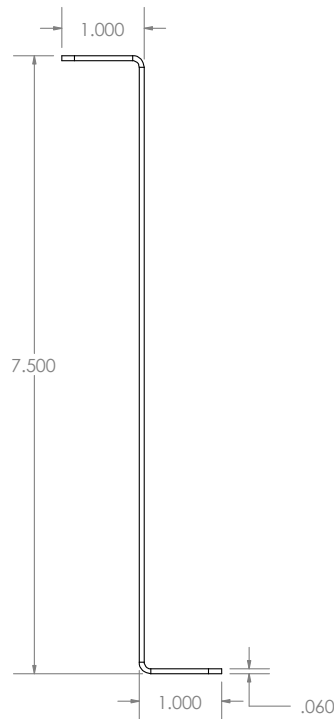
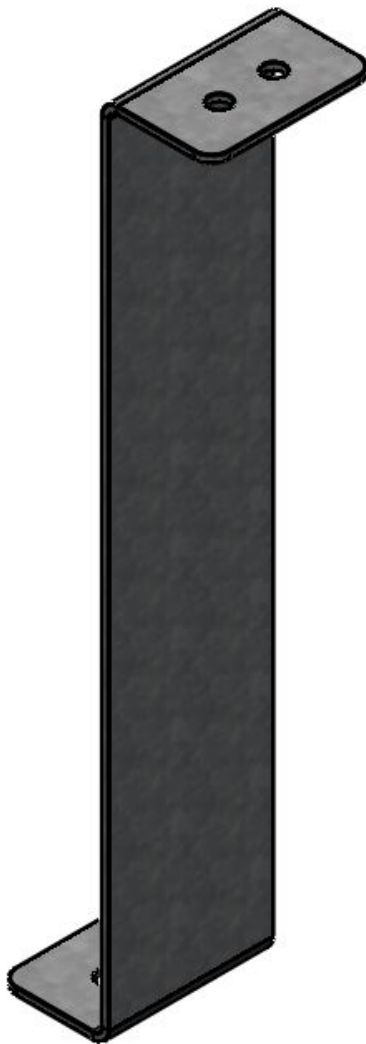
GALVANIZED STEEL - 16GA



HEADER BASE PLATE TRIPLE-JOIST

PART NO. HBP-TJ

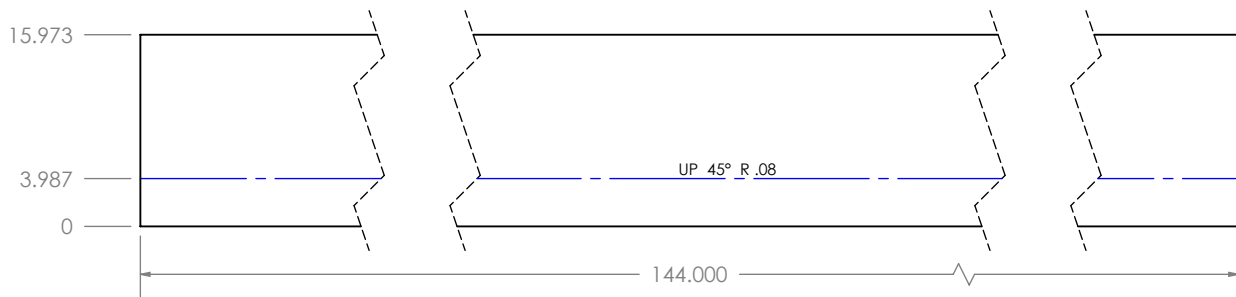
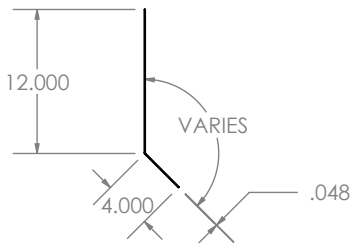
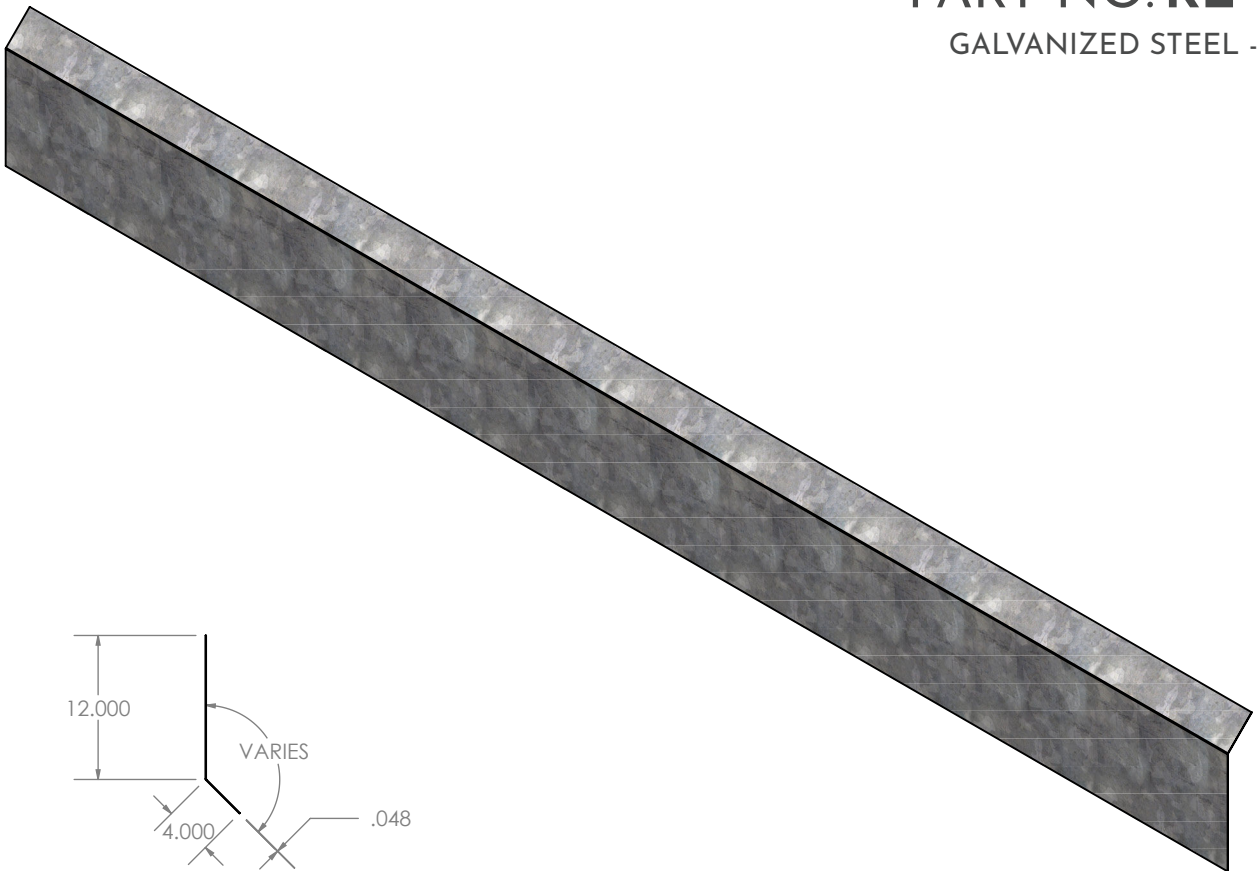
GALVANIZED STEEL - 16GA



ROOF EAVE OUTSIDE CONNECTION

PART NO. RE-OC

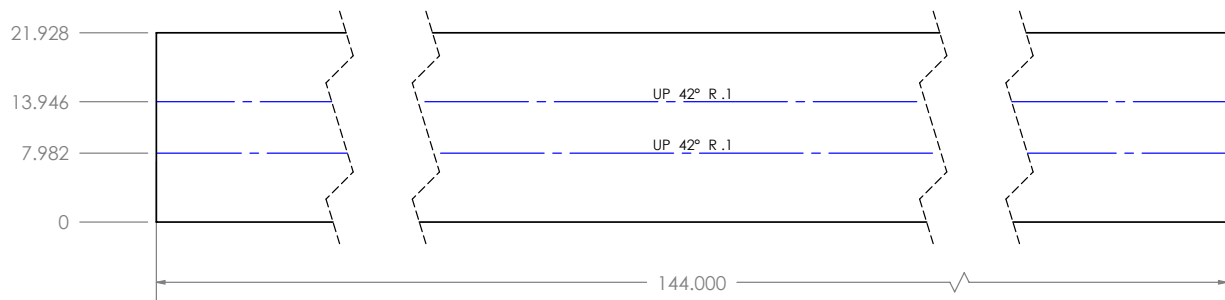
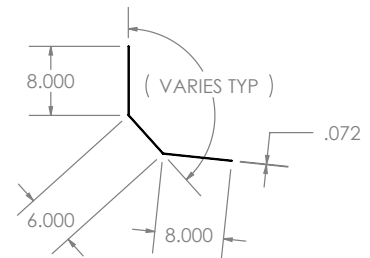
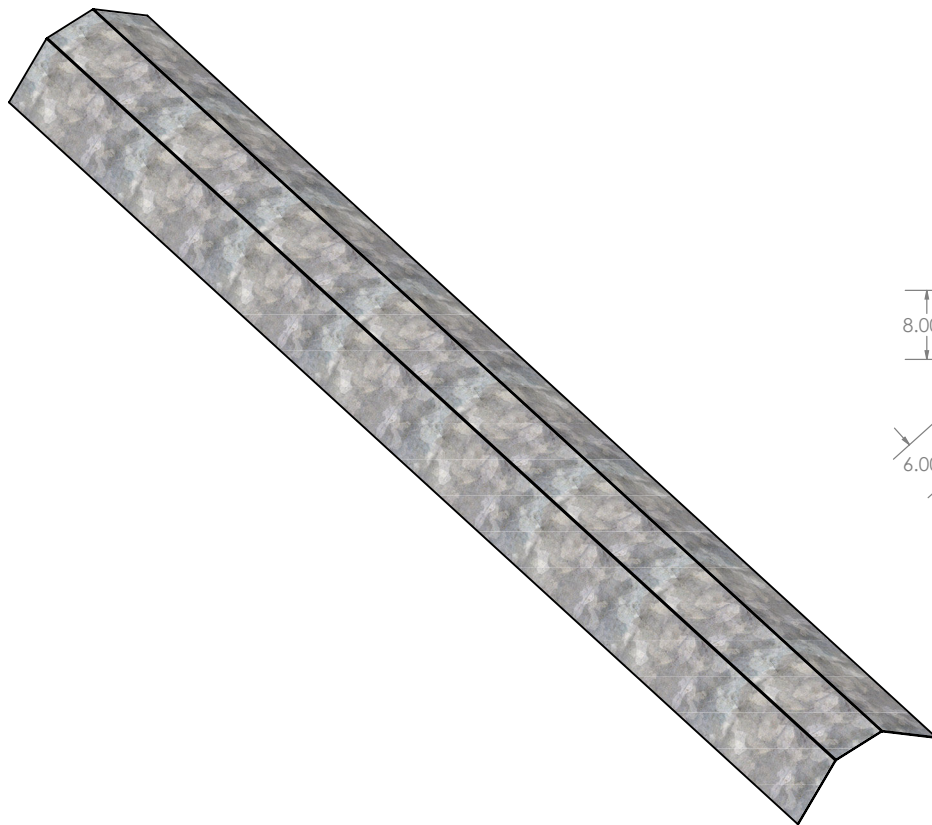
GALVANIZED STEEL - 18GA



ROOF RIDGE INSIDE CONNECTION

PART NO. RR-IC

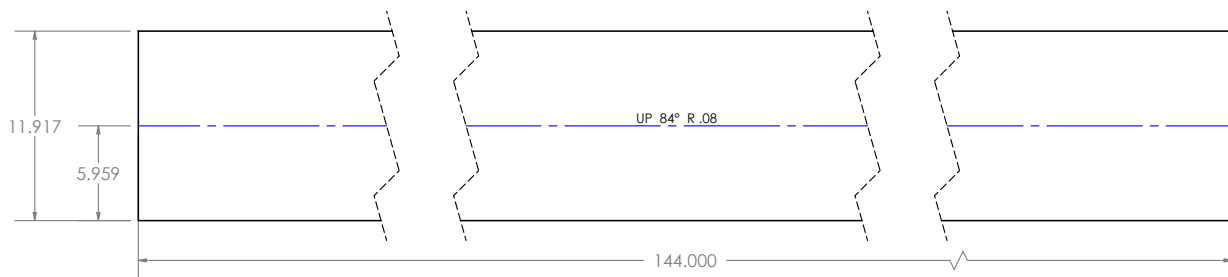
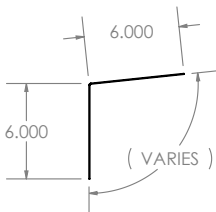
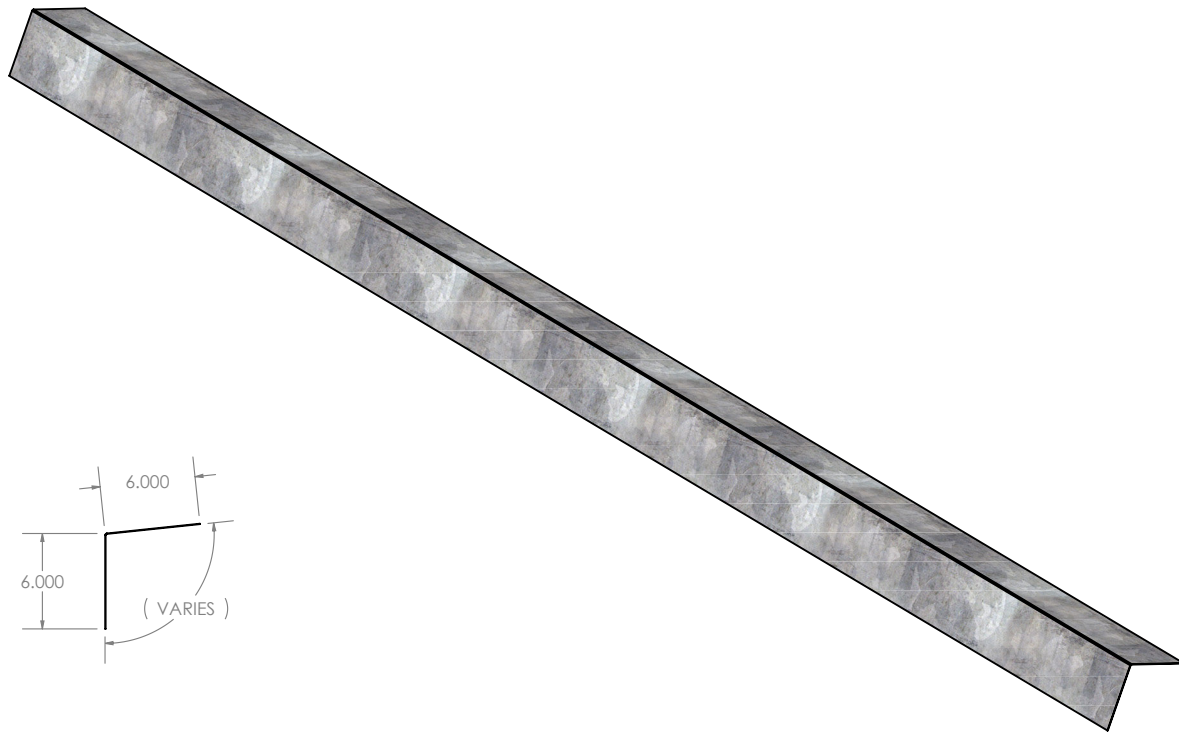
GALVANIZED STEEL - 14GA



ROOF RIDGE OUTSIDE CONNECTION

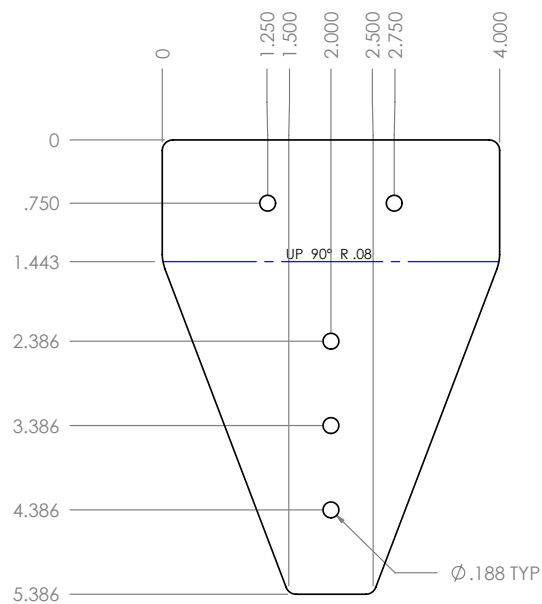
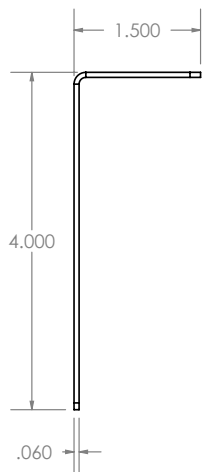
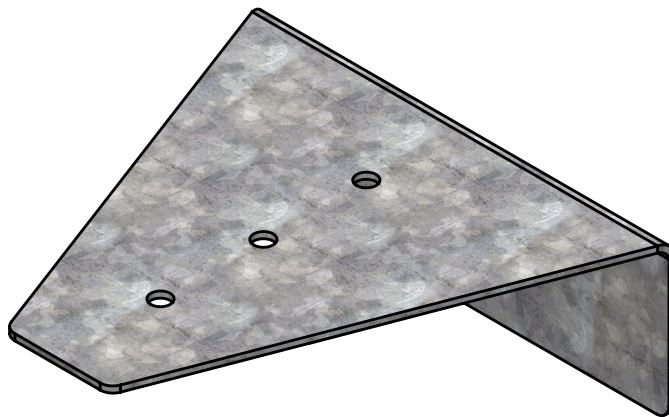
PART NO. RR-OC

GALVANIZED STEEL - 18GA



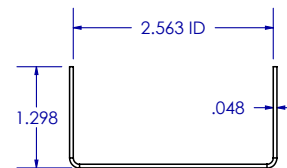
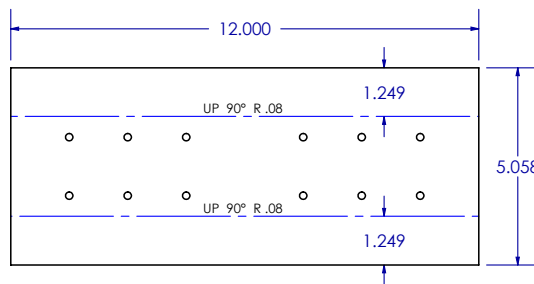
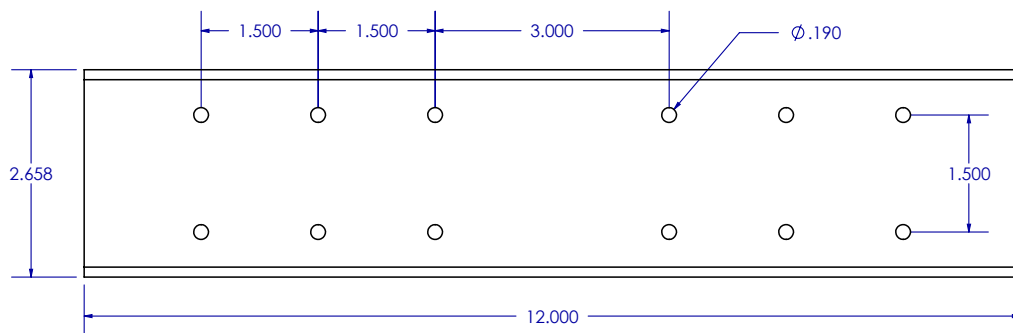
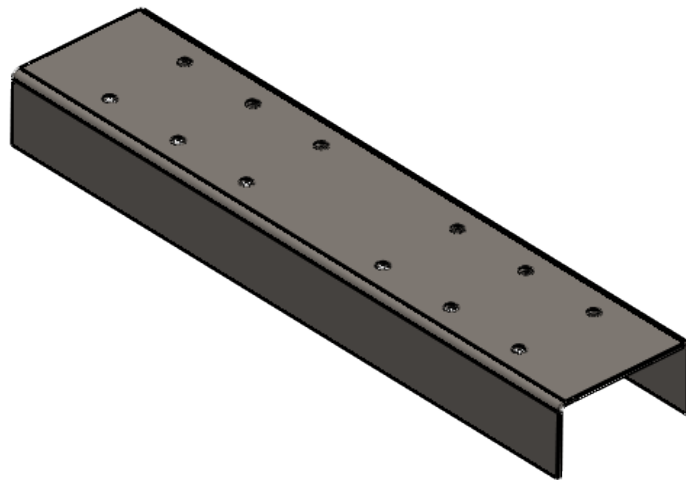
LATERAL WALL BRACE

PART NO. LWB
GALVANIZED STEEL - 16GA



PANELIZING CLIP SINGLE

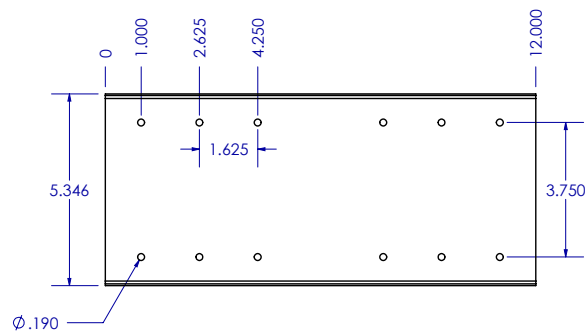
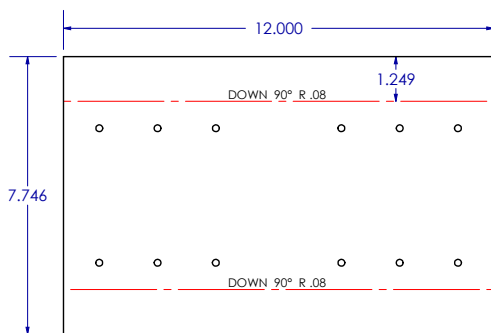
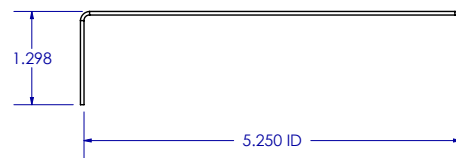
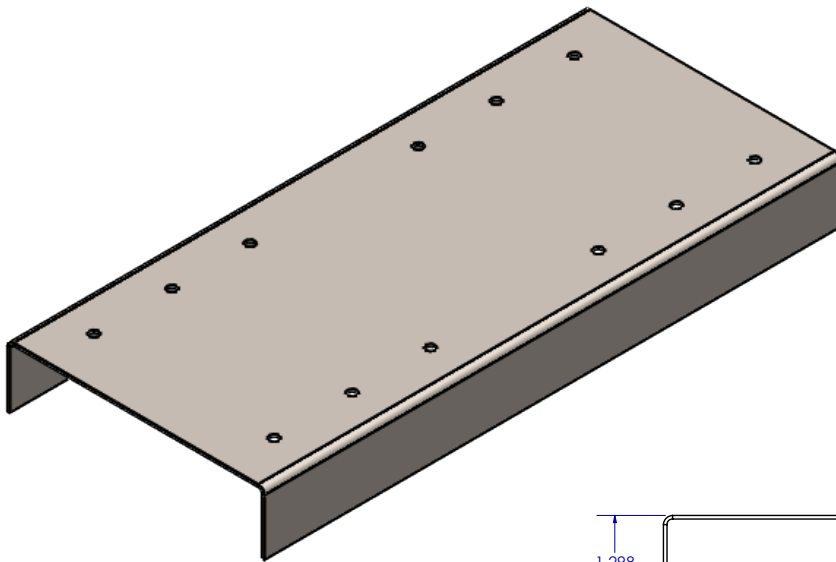
PART NO. PCS
GALVANIZED STEEL - 18GA



PANELIZING CLIP-2

PART NO. PC-2

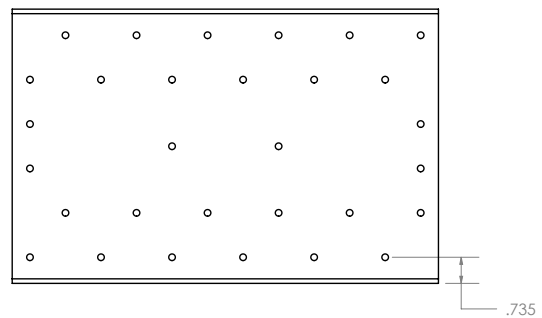
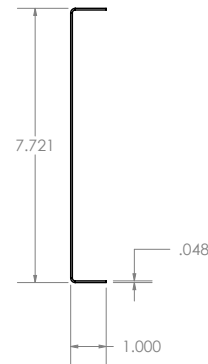
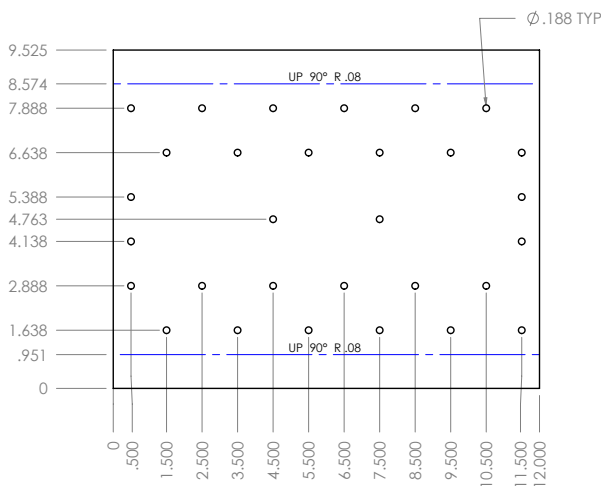
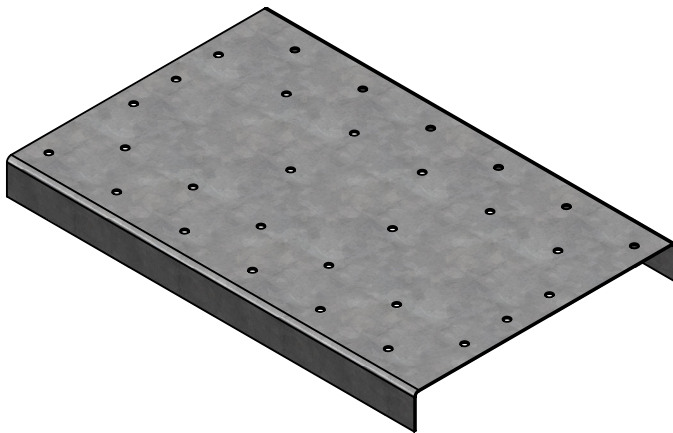
GALVANIZED STEEL - 18GA



PANELIZING CLIP-3

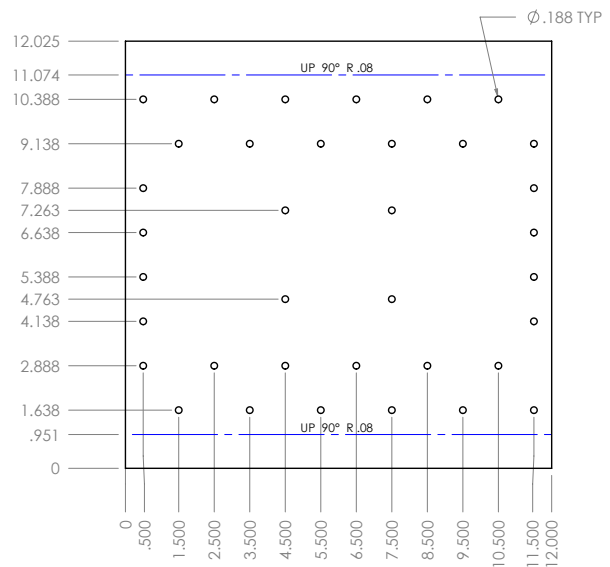
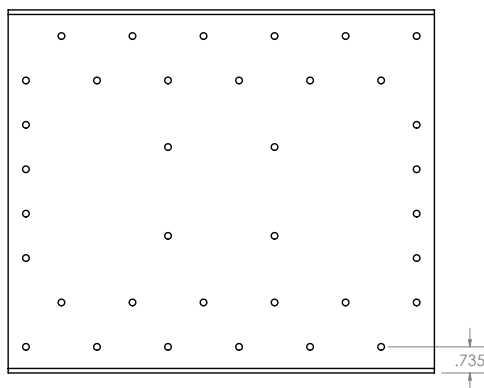
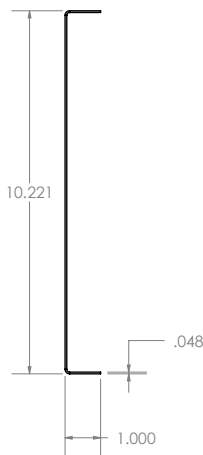
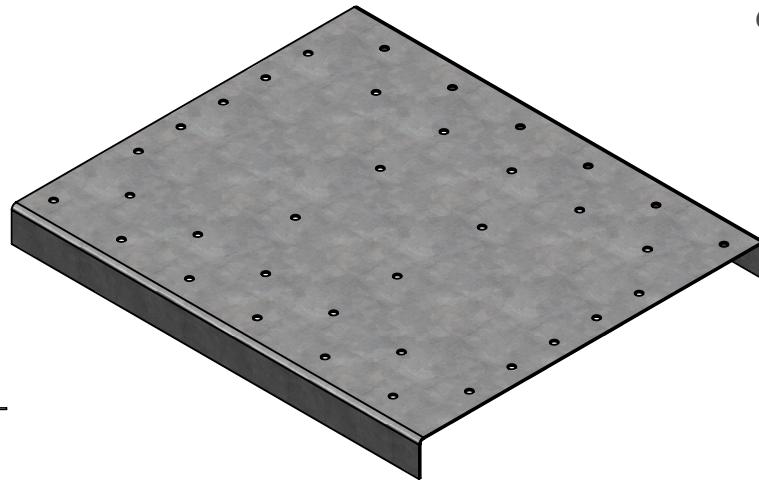
PART NO. PC-3

GALVANIZED STEEL - 18GA



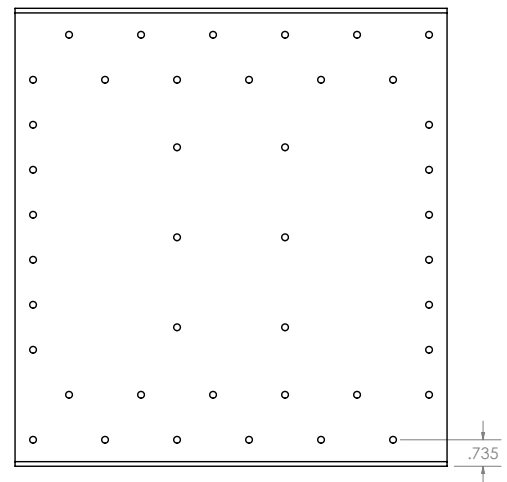
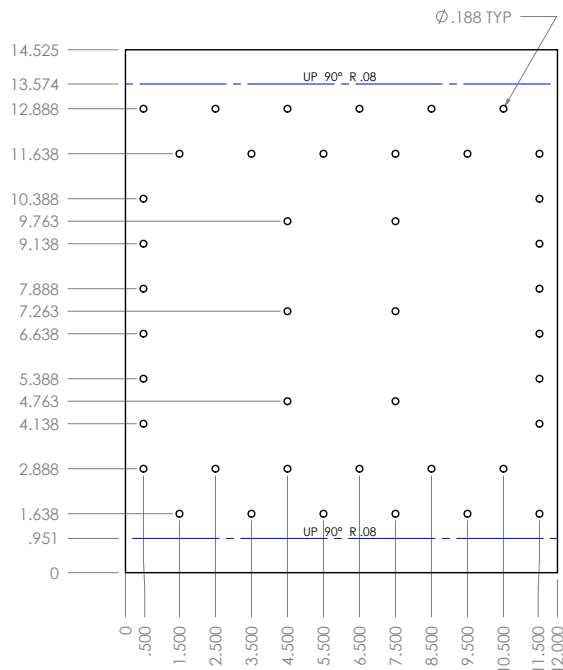
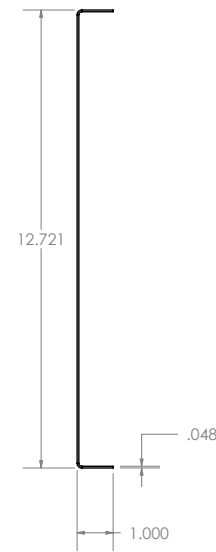
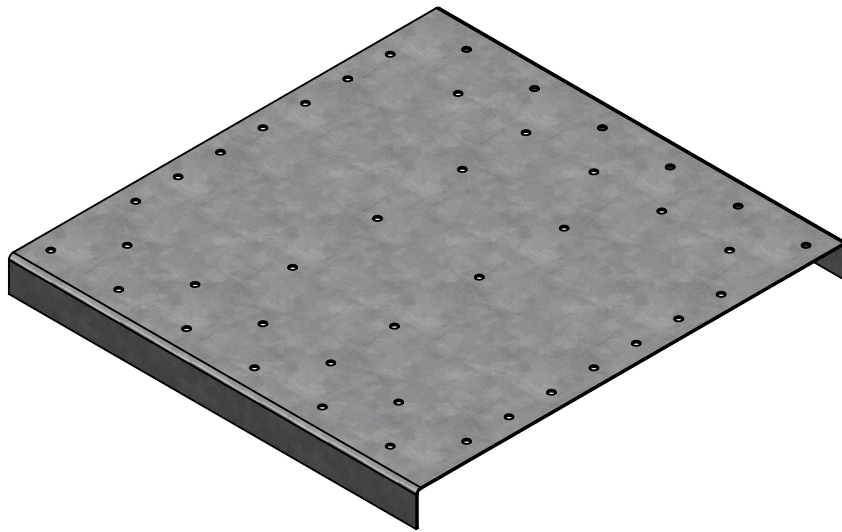
PANELIZING CLIP-4

PART NO. PC-4
GALVANIZED STEEL - 18GA



PANELIZING CLIP-5

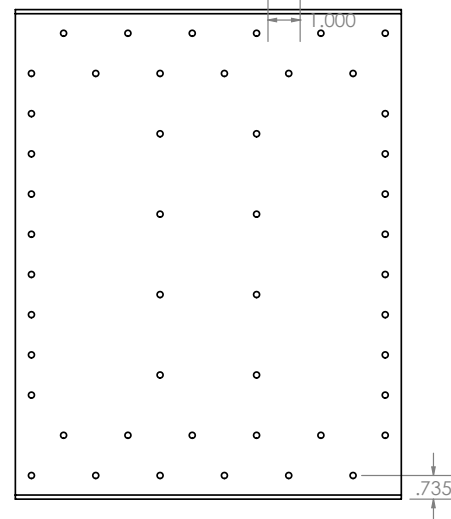
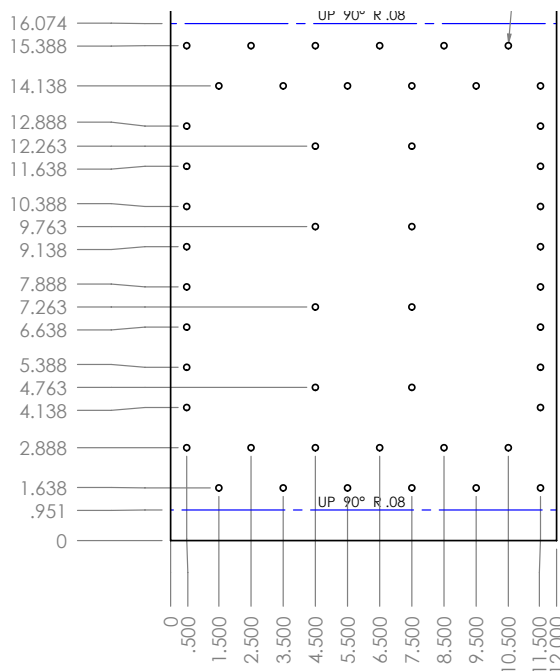
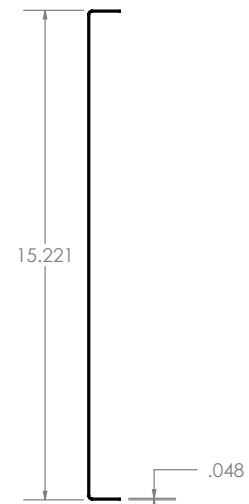
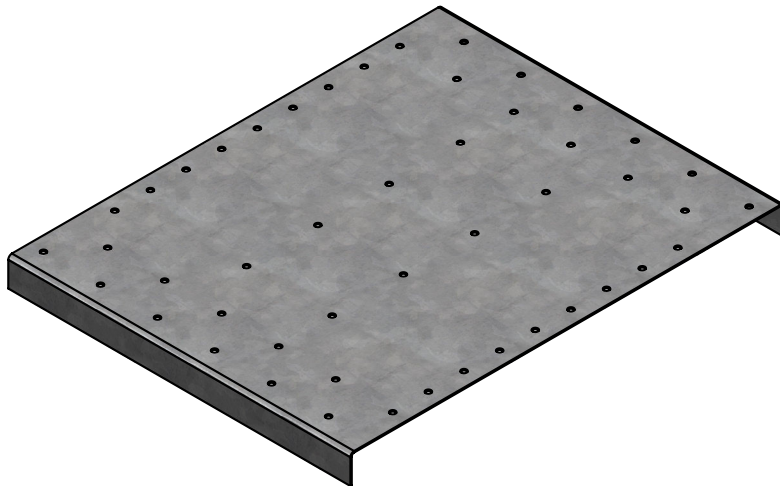
PART NO. PC-5
GALVANIZED STEEL - 18GA



PANELIZING CLIP-6

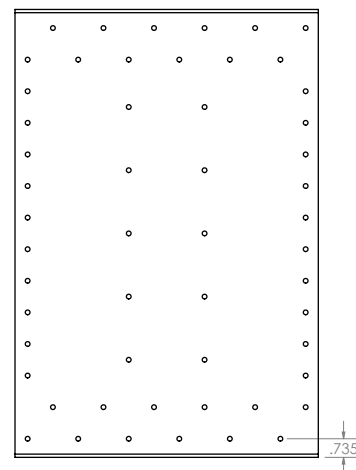
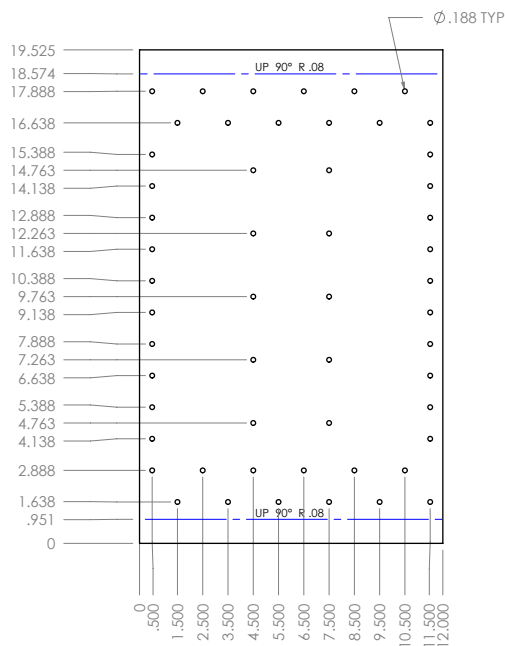
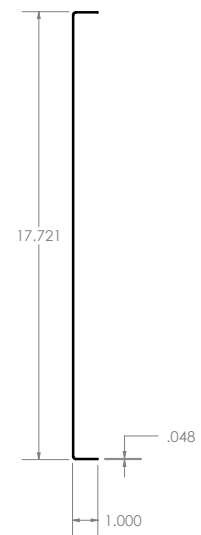
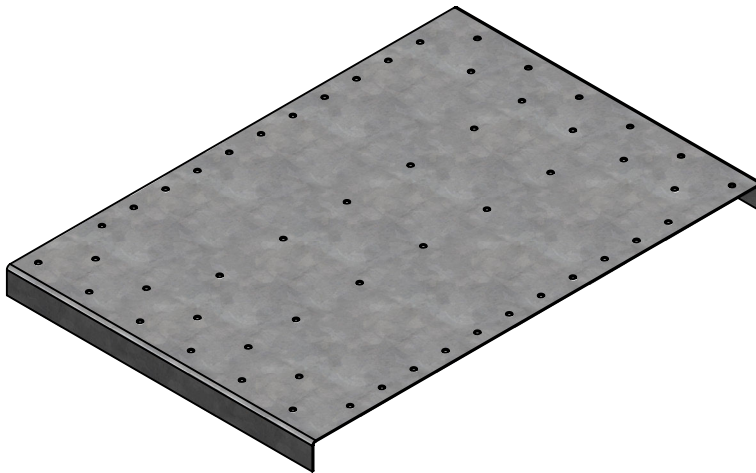
PART NO. PC-6

GALVANIZED STEEL - 18GA



PANELIZING CLIP-7

PART NO. PC-7
GALVANIZED STEEL - 18GA



DIAPHRAGM CLIP

PART NO. DIA-C

GALVANIZED STEEL - 18GA

